



# Practice & Workshop

Equipment & Supplies 2021

NORVILLE  
INSPECS GROUP PLC

[www.norville.co.uk](http://www.norville.co.uk)



# Alphabetical Index

A.B.D.O. Rule	7	Flat Nose 4mm Plier	54	Nose Pad Adjusting Plier	55	Side Cutting Plier	45
Abralox Powder	59	Foam Cleaner Spray	34	Nose Pad Adjusting Plier Micro Range	51	Side Cutting Plier	50
Adhesive Pad and Cup Holders	56	Foamdoctor - silicon free	59	Nose Pad Inserting Plier	51	Single Lens Display Unit	20
Air Duster Spray	34	Focimeter - Hand Held	26	Nose Pad Popping Plier	52	Six Frame Tray (Plastic)	19
Alcohol Dispenser	23	Focimeter Printer Paper	23	Nose Pads	30	Sizing and Screw Inserting Plier	45
Alignment Rule	6	Frame Adjustment Tool Kit	42	NUC II Organic Lens Polish	59	Slat Wall Case Display	17
Amsler Chart Manual	5	Frame Pouch - Foam	22	Nuts & Washers	29	Slat Wall Double 'A'	17
Assembly Plier	55	Frame Selector	8	Oblique Head End Cutting Plier	50	Slat Wall Large Display Shelf	17
Barrel Aligning Plier	49	Freeman Occluderule	11	Oblique Head End Cutting Plier for Hard Metals	51	Slat Wall Leaflet Dispensers	17
Bench Anvil Kit	38	Gas Torch	36	Oculus UB4	8	Slat Wall Single 'A'	17
Bendsnipe Plier	52	Get-A-Grip Driver Cushions Set	41	Optical Thumb Tool	38	Slat Wall Small Display Shelf	17
Bent Front Cutting Plier	55	Giant Display Specs	19	Pad Adjustment Plier	52	Slat Wall Solo Frame Holder	17
Block Remover Plier	54	Glass polishing pads	58	Pad Arm Curving Plier	47	Solution 30 Lens Cleaner	34
Block Removing Plier	54	Glass-reinforced terracotta fining/polishing tool	58	Pad Screws	29	Spectacle Pinhole Occluder	11
Blocking Buttons	56	Graduating Arm	25	Pad Set	29	Sponge - Large	61
Blue Lens Former	57	Half Round Long Nose Snipe Plier	54	Parallel Jaw Flat Plier	47	Sponge - Small	61
BPI Lens Dyes	24	Handy Tags	51	Parallel Jaw Round Plier	47	Spring Hinge Plier Kit	37
Bridge Reducing Plier	47	Hard Wire Side Cutting Plier	22	PD Extender Rule	46	Spring Hinge Plier Kit	49
Briot Magnetic Block Removal tool	61	Harsant LVA Folding Test Chart	4	PD Meter (The Pupilometer)	26	Standard Optical Rule	6
Budgie Stick	10	Harsant LVA Near Vision Rigid Chart	4	PD3 Rule	6	Standard Pads	57
Buffing Wheel (Takubomati)	60	Head width adjustment rings	31	Peening Plier	54	Strain Tester	26
Business Card Holder	19	Heat Shrink Tube	31	Penlight	11	Stylus Pen (VX40)	61
Butane Gas Refill	36	Heat Transfer Fluid	25	Pentel Sign Pen	23	Suction Cup Holders	56
Casio EZ Label Printer	21	Hepta Rule	7	Permanent marker	23	Suction Pad Holders	56
Cerox	59	Holding Nylon Plier	54	Photochromic Lens Demonstrator	26	Supra Clear Figure 8 Liner	33
Charging Bracket	9	HT Gauge	12	Pin Point Oiler	35	Supra Clear Round Liner	33
Chinagraph pencil	23	Hydrophobic Pads	57	Pin Tong	36	Supra cord	33
City Rule	7	Hypo-tube cement	35	PJ Double Delrin Jaw Plier	46	Supra Mounter	33
City Rule Aluminium	7	Inclination (Nylon Jaw) Plier	53	PJ Pantoscopic Tilt Fingertiece Plier	46	Supra Mounting Tool	33
City University Colour Vision Test 3rd edition	5	Inclination Fine Jaw Plier	53	PJ Temple Angling Plier	46	Supra Regular 'V' Liner	33
Cleaning Solution NR24	28	Individual Leaflet Dispensers	19	Plastic polishing pads	58	Surface Guard Hi-Tack	60
Clear Clipper	16	Ink cartridge marker unit	61	Plastic yellow fining/polishing tool	58	Surface Guard III Tape	60
Clipper Holder Options	16	Ink cartridge unit	61	Plating Pens	33	Surface Improvement Pad	57
Clipper Wall - Metal rods	16	Ink cartridge VX35 (red)	61	Plier Rack	39	Surface Saver Tape 3M	60
Combo Flat Chain Nose/Delrin Plier	43	Ink cartridge VX36 (single)	61	Pocket Clip Reversible	41	Swarf Removal Tool	40
Combo Flat Chain Nose/Delrin Plier	48	Ink cartridge VX36 (white)	61	Pocket Optical Rule	46	Temple Bending Plier	48
Combo Pad Arm/Nose Pad Adjusting Plier	47	Ishihara Colour Test Books	5	Polarising Axis Verifier Gauge	26	Temple Covers Slim Fit	31
Combo Round Chain Nose/Delrin Plier	43	Job Trays 3-Compartment Rx	22	Polish (Brown)	59	Temple Sleeve Grip	31
Combo Round Chain Nose/Delrin Plier	48	Job Trays Extra Sturdy Laboratory/Dispensing	22	Polish (Light Brown)	59	Temple Tamer	37
Combo Round Chain Nose/Delrin Plier Micro Range	51	Jumbo Lens Thickness Caliper	12	Polishing Machine	60	Temple Tip Silicone	32
Concorde Tungsten Carbide End Cutting Plier	50	Kay Animated Stick	10	Polishing Stick	59	Temple Width Calipers	12
Concorde Tungsten Carbide Side Cutting Plier	50	Kay Fixation Sticks	10	Polycarbonate polishing pads	58	Terms & Conditions	67
Confirmation Test Adjustable Four Lens	10	Key Ring Screwdriver Stand	19	Posters	15	Test Chart - 3m	4
Confirmation Test Fixed Four Lens	10	Label Printer Tape Cassettes	21	Precision Steel Rule 20cm	6	Test Chart - 6m	4
Confirmation Test Two Lens	10	Labman 'J' Lens Rule	6	Premium Pads	57	The Stealth Screwdriver	40
Coolant Oil	59	Laboratory Millimetre Rule 7"	6	Pricing Gun	21	Thermal Printer Paper (VX340)	61
Coval Clear Glazing Foils	58	Lacquer	33	Pricing Gun Labels	21	Thermal Printer Paper (VX35)	61
Cradle Clip	16	Lens Adjustment Plier	53	Pricing Labels - Coloured	21	Thermal Printer Paper (VX36)	61
Cross Cylinder Single	10	Lens Blocks	56	Prism Bars in Case	11	Thermometer	25
Cross Cylinders Set	10	Lens Grip Spray	58	Promex Plating Machine Starter Kit	33	Tilt Angle Gauge	7
Crystal Rims with Handle	20	Lens Harpoon	40	Propeller Tags	21	Tint Tank Accessories	25
Curl Ends Silicone	32	Lens holder - Slant	25	Pump and Tank	62	Tool Kit - Large	42
Curved Holding Slotted Nylon Plier	53	Lens holder - UV White	25	Pyrex Beakers	25	Tool Kit - Small	42
Curved Tip Nose Chain Plier	49	Lens holder Standard	25	QuickFix Frame Rivets	37	Tool Rack Acrylic	39
Cushion Pads in Silicone AirTec	31	Lens Marking Ink	23	R.A.F. Binocular Gauge	12	Tool Rack Magnetic	39
Cutting Plier	55	Lens Measure Traditional	13	Reading Test Card I	4	Tool Rack Metal	39
Cyrex Invisible Washers	33	Lens Packet - Double with flap	22	Reading Test Card II	4	Tool Rack Wood	39
Damato Fieldscreener	5	Lens Packet - Single	22	Reading Test Card III	4	Tool Stand - Curved	39
Deblocking Plier	50	Lens Pouch - Foam	22	Reading Test Cards 'EL' Type A & B	4	Tool Stand - Round	39
Deblocking Plier 15mm round	50	Lens Setting Chart	7	Rectags	21	TOPCON LM-8 Focimeter	27
Deblocking Plier 15mm round with Metal Cap	50	Lens Splitting Plier	50	Refill Ink	23	Tray Tags - Additional	22
Defoamer	59	Lens Storage Box/Cabinet Dividers	22	Replacement Driver Blades	41	Tri-Angling Plier	48
Deluxe Screwdriver Set	42	Lens Thickness Caliper	12	RF Special permanent marker	23	Trial Frame	8
Demonstration Case	20	Lens Thickness Gauge	12	Rim Curving Plier	53	Trial Frame - Babies	8
Demonstration Case Foam Inlay	20	Lens Turning Plier 20mm or 25mm	49	Rimless Compressing/Bracing Plier	44	Trial Frame - Clip-on	8
Demonstration Set Drivewear Sunwear	20	Lever plate - Replacement	37	Rimless dot marker	23	Trial Frame - Universal	8
Demonstration Set Versatile	20	LG Flat Nose Plier	47	Rimless Hole Gauge	38	Trial Frames - Visor	8
Diagonal Cutter Plier	53	Lightbulbs	60	Rimless Post Pulling Plier	51	Trial Lens Set	9
Digital Caliper	12	Locking Jaw Plier	54	Rimless Tube Refresher	40	Trial Lenses - Individual	8
Digital Curve Clock	13	Loctite 290	35	Rimless Tube Stripper Plier	51	Tweezer Push-on pad Removal	36
Digital Curve Clock 2 in 1	13	Loctite 3491	35	Robin Rule	6	Tweezer Self-closing Fine Tip	36
Digital Thickness Gauge	13	Loctite 460	35	Romanes Occluder	11	Twister Clip Displays	16
Display - 4 Clip Slope	19	Loctite 480	35	Round Nose Snipe Plier	53	Ultra Clarity Care Pack	34
Display - 6 Clip Slope	19	Loctite Adhesives	35	Round/Flat Nose Plier	45	Ultra Clarity Desk Top Display	34
Display Bars	18	Loctite Glue Remover	35	Round/Flat Nose Plier	48	Ultra Clarity Wipes	34
Display Bars - Security	18	Long Nose Chain Plier	43	Rubber Guard Bench Block	38	Ultrasonic Cleaner CD-4800	28
Domiciliary Kit - Premier	9	Long Nose Chain Plier	49	Rubber top Nosepiece	9	Universal Filter Unit	62
Double Delrin Jaw Plier	44	Long Nose Chain Plier Micro Range	52	Saddle Bridge	61	Universal Nut Grabber (Guild)	40
Double Delrin Jaw Plier	48	Maddox Wing Test	11	Screw and Nut Rimless Bracing Plier	44	Universal Nut Grabber (Regular)	40
Double Delrin Jaw Plier Micro Range	51	Maga S Frame Heater	28	Screw Cutting Plier	53	UV Block	25
Double Nylon Jaw Plier	47	Magna Clip Holder	20	Screw Dial Boxes Empty	29	UV Lens Multi-function Tester	26
Double-Sided Rule	6	Magnetic Clip Display	6	Screw Finishing Tool	40	UV+ Scratch Resistant Coat	25
Dressing stick (Fine) White	59	Magnetic Tint Sample Tree	20	Screw Flaring Plier	44	Ventilette 3 Frame Heater	28
Dressing stick Blue	59	Marc Verifier	7	Screw Loosening Fluid	35	Ver.O glass cleaner	25
Dual Index Lens Measure	13	Mark On permanent marker	23	Screw Ring Set	42	Versatile Lens Twirl & Flip	10
Duratool Needle File Set	36	Metaflow 117	59	Screw Set	29	Vertex Distance Gauge Set	12
Dye Out Hand Cleaner	25	Metal Glazing Plier	52	Screw Trimmer & Miller	36	Vertical Displays	19
Dye Pot Cleaner	25	Microfibre Cloths, Practice Size	34	Screwdriver - Ball Power Driver	41	Vertical Height Strip	7
Ear Locks - Large 35mm	32	Mini Screw Extractor (narrow jaw)	36	Screwdriver - 4x4 Driver	40	WD40 Lubricating/Easing Oil	35
Ear Locks - Medium 26mm	32	Mini Screw Extractor (wide jaw)	36	Screwdriver - EZ Grip Driver	40	WECCO Block Paddy	61
Ear Locks - Mini 17mm	32	Mini Tags	22	Screwdriver - Prestige	40	WECCO Magnetic Block Removal tool	61
Eliminator Marking Ink Remover	23	Miniflam Soldering Spares	36	Screwdriver - Reversible Driveshaft	41	White pen pupil marker	23
Empty Oval Lognettes	20	Mirror Free Standing Chrome	14	Screwdriver - SU-8 Pick Up	41	White Rims	20
Empty Round Lognettes	20	Mirror Pedestal	14	Screwdriver - Trubless Aluminium	41	Wide Jaw Angling Plier	43
Eye Model	15	Mirror Plastic Hand	14	Screwdriver Wooden Handle	41	Wide Jaw Angling Plier	48
Eyewire Closing Plier	49	MK3 Optical Rule	6	Screwdriver, Nut Wrench and Screw Ring Set	42	Wing Clip	16
Eyewire Curving Press	38	Multi screwdriver	40	Screwdriver/Locknut Driver Set	42	Wire Bracing Plier	43
Eyewire Forming Plier	44	Narrow End Flush Cutting Plier	44	Screwless Rimless Compressing Plier - Lab Use	51	Wire Bracing Plier	48
Eyewire Forming Plier	49	Narrow Eyewire and Bridge Forming Plier	44	Screws Rimless Glazing	29		
Facial Measurement Gauge	7	Near Vision Pad 310	9	Screws Temple / Glazing	29		
Fairbanks Frame Rule	7	Needle Variety Kit	35	Screws Temple / Glazing / Pad	29		
File - Flat	36	Needles - Replacement	36	SEEGREEN Colour Match Lens Dyes	24		
File - Half Round	36	Neutraliser	25	Selyt Cloths	34		
File Guard	38	No-Bake Scratch Resistant Coat	25	Setting Plier	54		
Finger Piece Plier	43	Norville Autoflow Frame Heater	28	Shootout Frame Repair Multi-tool Kit	37		
Finger Piece Plier	49	Nose Pad Adjusting Plier	45	Shootout Screw Ejector	37		
Finger Piece Plier Micro Range	52	Nose Pad Adjusting Plier	47	Side Cutter Plier	52		



## Refraction & Dispensing

Test Charts & Reading Cards . . . . .	4
Contrast & Colour Tests . . . . .	5
Measuring Rules . . . . .	6
Measuring and Lens Setting . . . . .	7
Trial Frames & Clips . . . . .	8
Trial Sets . . . . .	9
Assessment & Accessories . . . . .	10–11
Measuring for Fitting . . . . .	12
Lens Thickness & Curvature . . . . .	13

## Practice Fitting

Mirrors . . . . .	14
Models & Posters . . . . .	15
Frame Displays & Fittings . . . . .	16–18
Product Displays/Lens Demonstrators . . .	19
Lens Demonstrators . . . . .	20
Pricing Sundries . . . . .	21

## Finishing Supplies

Job Trays, Tags & Dividers . . . . .	22
Lens Marking Sundries . . . . .	23
Tint Dyes . . . . .	24
Tinting Supplies . . . . .	25
Inspection & Verification Equipment .	26–27
Frame Heaters & Ultrasonic Cleaning . . .	28

## Frame & Glazing Components

Screws & Nuts . . . . .	29
Nose Pads . . . . .	30
Nose Pads & Temples . . . . .	31–32
Lens Liners & Supra Cords . . . . .	33
Plating Supplies . . . . .	33
Cleaning Solutions . . . . .	34

## Optical Tools

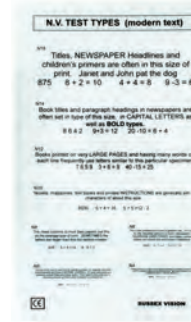
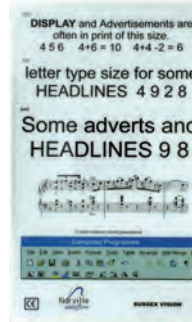
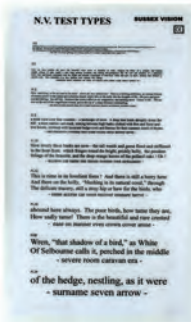
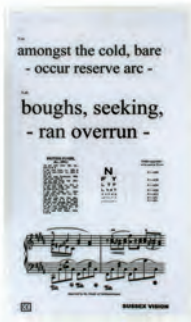
Adhesives, Sealants & Oils . . . . .	35
Hand Tools . . . . .	36–38
Tool Racks & Stands . . . . .	39
Tools & Screwdrivers . . . . .	40
Screwdrivers & Sets . . . . .	41–42
Pliers - Guild Range . . . . .	43–45
Pliers - Parallel Jaw Range . . . . .	46
Pliers . . . . .	47–55

## Edging Supplies

Pads, Surfacing & Polishing . . . . .	56–58
Surfacing & Glazing Consumables . . .	59–60
Lightbulbs . . . . .	60
Edging Equipment & Supplies . . . . .	62–63

Terms & Conditions . . . . .	65
------------------------------	----

If you are unable to find what you require, please call us on 01452 510332 and we'll be more than happy to help.



▲ Reading Test Card I

Ref: RTC1  
Double sided. N.5 to N.48 includes newsprint and music. Laminated.

▲ Reading Test Card II

Ref: RTC2  
Double sided. N.4 to N.48 includes music, numbers and a VDU screen representation. The main text side has the largest N18 at the top, reducing to N4 at the bottom. Laminated.

▲ Norville Handy Reading Test Card III

Ref: RTC3  
Double sided. Economical and ergonomic. N24 to N5. Wording by Harsant (same text on both sides).



▲ Three Metre Test Chart

Ref: TMTC  
Non-reflective washable surface. Snellen test one side, child's picture test on the other. Laminated.

▲ Six Metre Test Chart + Hand Card

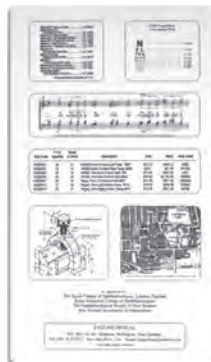
Ref: SMTC  
Non reflective washable surface. Snellen test one side, illiterate 'E' on the other. Patient 'E' card has a reading test on the reverse. Laminated.

▲ Harsant LVA Near Vision Rigid Assessment Charts

Ref: 7001  
Logarithmic distance vision chart using Snellen notation from 60 metres to 5 metres. Includes "Clinician's Card" with predicted near vision magnifications, additions when the chart is used at 3 metres and LogMAR equivalents. The chart may be used hand-held at any distance.

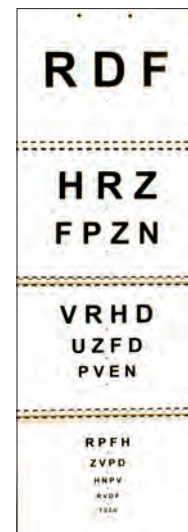
EL-type A

EL-type B



▲ 'EL' Reading Test Cards Type A & B

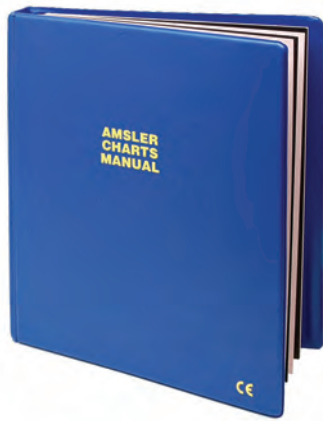
Ref: EL-type A Or Ref: EL-type B  
Double sided reading cards. Type A: Face - from N5 at top to N48 at the bottom. Type B: Face - from N48 at top to N5 at the bottom. Reverse - an assortment of text and graphics. Size: 17 x 30cm



◀ Harsant LVA Folding Test Chart

Ref: 7003  
Logarithmic distance vision chart using Snellen notation from 60 metres to 5 metres. Includes "Clinician's Card" with predicted near vision magnifications, additions when the chart is used at 3 metres and LogMAR equivalents. The chart is foldable and may be used hand-held at any distance.





▲ **Amsler Chart Manual**

Ref: 234

An essential tool for visual screening purposes, it has been designed to disclose changes in the macular and foveal areas, which may be difficult, or in some cases impossible, to detect by other means. A full set of instructions describing their use and interpretation of results is supplied, together with recording charts.

**Spare pads** Ref: 234A



▲ **City University Colour Vision Test 3rd edition.**

Ref: CUVT

Colour differences and closest matches for screening. Detects protan, deutan and tritan anomalies.



▲ **Ishihara Colour Test Books**

Available as:

- 10 plate Ref: ICTB10
- 14 plate Ref: ICTB14
- 24 plate Ref: ICTB24
- 38 plate Ref: ICTB38



▲ **Damato Fieldscreener**

- 20 Point. Ref: 432-D20
- 30 Point. Ref: 432-D30
- 60 Point. Ref: 431-D60



### ▲ PD3 Rule

Ref: 2069

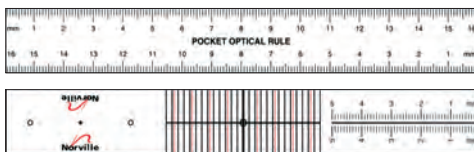
Three rules plus a pinhole occluder. Use the scales on this rule to measure binocular PD, monocular PD, seg height, bridge DBL of frame and eyewire A and B dimensions. A pinhole occluder tests visual acuity. 187mm long by 24.5 wide.



### ▲ Alignment Rule

Ref: ALR

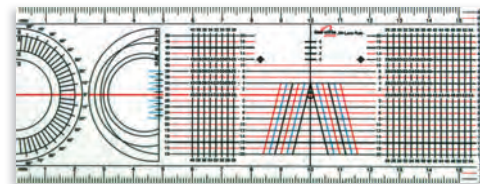
Clear acrylic rule with bottom rest. Horizontal lines for seg alignment and vertical mono p.d. markings. Side degree scale for wrap angle measurement.



### ▲ Pocket Optical Rule

Ref: MR

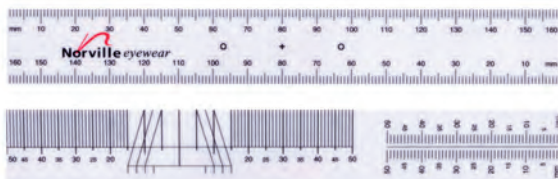
Sturdy 4mm thick rule. Standard mm markings on reverse. 160mm long



### ▲ Labman 'J' Lens Rule

Clear Ref: JR1 White Ref: JR2

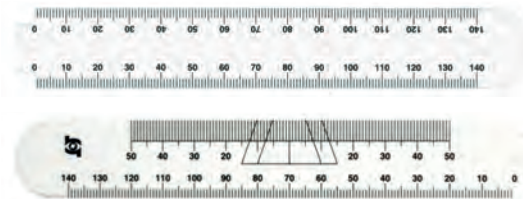
Designed by optical people for lab use. Clear design allows rule to be placed over mounted lenses. Three colour bridge centring grid. Extensive mono PD measuring grid, vertically and horizontally. Top and bottom full rule measuring.



### ▲ Norville Double-Sided Rule

Ref: MR-2016

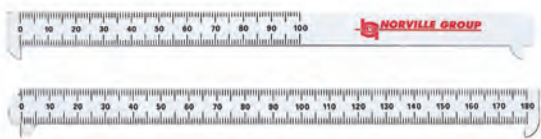
3mm thick rule with standard 0 - 160mm scale. Right and left handed.



### ▲ Norville Standard Optical Rule

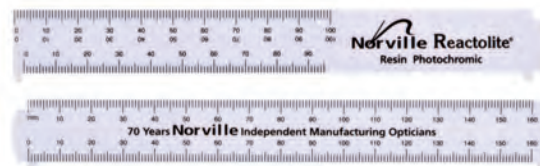
Ref: NR

Robust rule with standard 0 - 140mm scale. Both right and left handed. Also has monocular P.D. facility.



### ▲ Robin Rule Ref: RR

18cm rule. Can be used to measure screw to bend, eyesize, frame p.d., optical centration etc.



### ▲ MK3 Optical Rule Ref: MK3

16cm rule. 2mm white perspex. Can be used to measure screw to bend, eyesize, frame p.d., optical centration etc. Peg and notch ends for speed and accuracy.



### ▲ 7" Laboratory Millimetre Rule Ref: 2065

The ends of this rule are notched for easy and accurate eyewire readings. White numbers on red field run in opposition so that the rule always reads in the correct direction. Increases accuracy and eliminates fumbling.



### ▲ PD Extender Ref: 2067

Accurately measures bifocal placement from the pupil to the lowest point on the eyewire. Great for taking box measurements. Clear plastic with black scale.

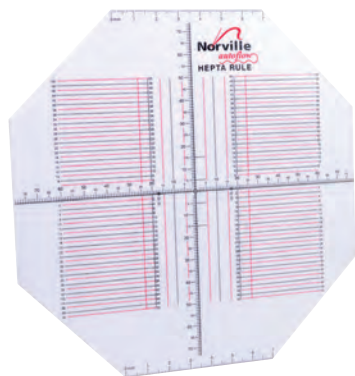


### ▲ Precision Steel Rule

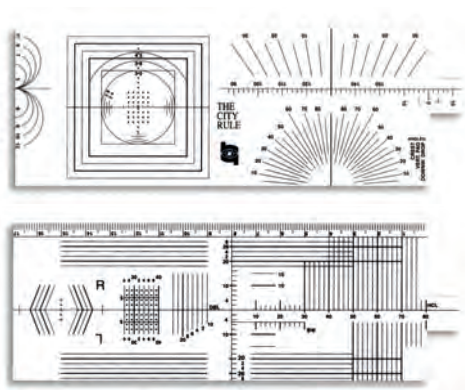
20cm Ref: RE-105 15cm Ref: RE-104

Reversible high grade steel rule, with 0.5mm and 1mm graduations.

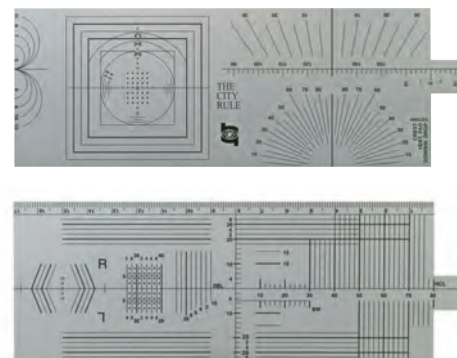




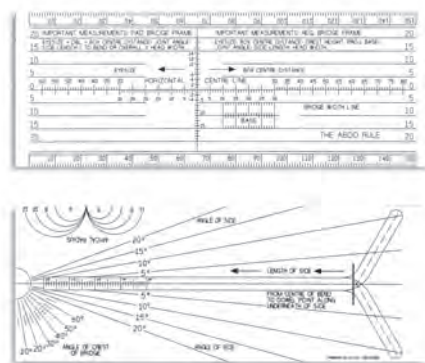
▲ **Hepta Rule Ref: HP**  
White plastic



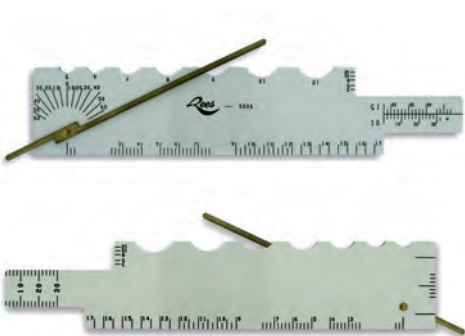
▲ **City Rule Ref: CR**  
Wide range of measurements. White plastic with black scales. Complete with instruction manual.



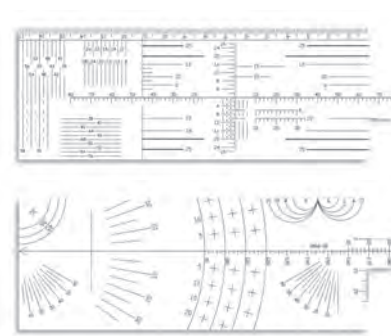
▲ **City Rule Aluminium Ref: CRA**  
Wide range of measurements. Aluminium with black scales. Complete with instruction manual.



▲ **A.B.D.O. Rule Ref: DFR**  
White plastic, 155mm x 60mm. Measures 11 different frame dimensions. Complete with instruction manual.



▲ **Facial Measurement Gauge Ref: 000600**  
Double sided. Multifunctional. Takes almost all facial measurements. Complete with instruction manual.



▲ **Fairbanks Frame Rule Ref: FFR**  
Developed for teaching frame measurement techniques. Complete with instruction manual.



▲ **Lens Setting Chart Ref: LSC**  
21 x 14cm. Combined protractor, ELD chart, segment gauge and PD verifier.



▲ **Tilt Angle Gauge Ref: TIA**  
Simple swing gauge for tilt angle measurement. Works with 4, 6 or 8 base.



▲ **Vertical Height Strip**  
Self-clinging vinyl. Available with scales printed in either black or white on a clear vinyl. An easy way of verifying bifocal or PPL heights.  
50 Black Ref: VH50B  
100 Black Ref: VH100B  
50 White Ref: VH50W  
100 White Ref: VH100W

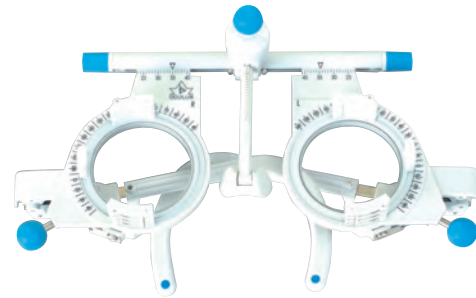


▲ **Marc Verifier Ref: MARC**  
Pupillometer verification gauge. To check accuracy of your PD meter.



▲ **Babies Trial Frame Ref: B100**

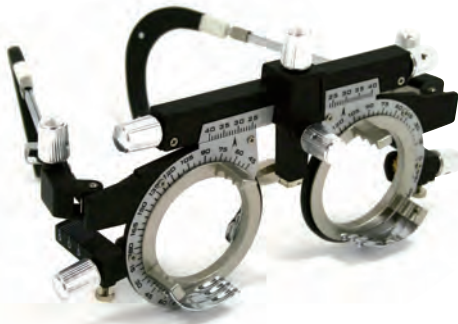
Refraction and control of visual acuity can be simple when the person who undergoes the test is at ease and collaborates. Babies however are unpredictable, they become suspicious if any device prevents the peripheral vision. The B-100 trial frame is always well balanced on the face because it is held at the back by elastic and allows the refractionist to have the patient's full concentration. Lens holder rings use standard 38mm trial lens sets. The B-100 trial frame comes in a small handy hard case.



▲ **Oculus UB4 Ref: 275**

The increased awareness of topics such as toxicity and skin allergy, hygiene and recycling, as well as design, was a stimulus to create a new trial frame. It was important to retain previous features such as quality, range of adjustment, reliable engineering, durability and function.

- New operating elements for adjustment of cyl, axis, PD and bridge.
- Comfortable access for trial lens insertion.
- Modern spring mechanism for trial lens retention.
- Elegant mechanism for side angling.
- Constructed to avoid hair entrapment.
- A material selection allowing use of ultrasonic cleaning equipment and eliminating the need for lubricants.



▲ **Universal Trial Frame**

Ref: CT2202C

Adjustable bridge, side lengths and angle.  
P.D. range 48 - 80mm



▲ **Trial Frame Ref: 547**

P.D. 54 - 70mm. Titanium, stainless steel and aluminium lightweight build. One touch P.D. adjustment. Three front and one back cell per eye. Spring action temples. Adjustable temple angle. Anti-bacterial treatment to plastic temple ends.



◀ **Clip-on Trial Frame Ref: CT2220**

Set of two clip-on trial lenses in a box. Each trial lens can hold 3 lenses. Axis marking provided for use with cylinders. Rubber coating on the clips to protect the spectacle lens.



▲ **Frame Selector**

Ref: FRSEL

Sits behind frame. Takes one trial lens in each side to allow patient to judge acceptability of frame style.



▲ **Individual Trial Lenses**

Trial lenses can be provided to your requirements in either cyl or sphere, in either of the mounts displayed above.

Full aperture - Ref: ITLF

Reduced Aperture - Ref: ITLR



▲ **Visor for Trial Frames**

Available as: 90°/180° - Ref: 308A and 45°/135°

Ref: 246A also in red & green lens colours.





◀ Trial Lens Set

Ref: CT4322

Full aperture. Clearly marked metal rims. 260 lens set containing concave and convex, spheres & cylinders. 14 piece prism set. Red, green, and frosted glass accessories. Cross cylinders provided. Weight 7Kg.



◀ Premier Domiciliary Kit

Ref: 288

Our most comprehensive home refraction kit that covers most of the distance and near tests that you require for a complete refraction. The kit includes:

- The DOM illuminated I.R. remote controlled 3M Distance/ Near Test Type

Distance

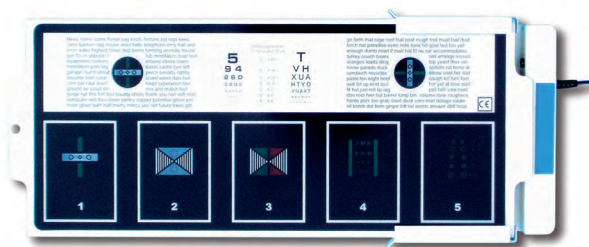
- Snellen chart giving the equivalent of 6160 to 615
- Concentric circles.
- Duochrome
- Distance Fixation Disparity
- Spot

Near Vision

- Reading chart N4 to N12
- Stereopsis test
- Suppression test
- Oblique tangent scale
- Bichromatic test
- Cross cyl. and balance chart
- A full trial lens set (reduced aperture and metal rims)
- Spring cell trial frame
- Maddox Phoria Measure
- Polarised visor for the D.F.D.U., suppression tests etc.
- Maddox twirl for the Phoria checks.

The whole kit is contained in a smart Pilot case with room to house further equipment such as a Perkins tonometer, hand instruments, frames, confirmation tests or a Handy Lensmeter. There is also a pouch on the side for patient records, etc.

Overall weight: 8.5 Kilos. Dimensions: 46 x 20 x 33 cms.



◀ Near Vision Pad 310

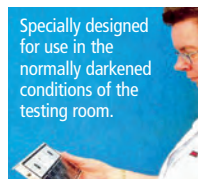
Ref: NVP 310

Sticking closely to the principles of the Mallett NV Disparity unit, the Pad offers even more. The infra-red remote control is exceptionally ergonomic and user-friendly. Illuminated text has been added, reading from N5 to N12, which can be individually highlighted. Neat and light, the unit is rechargeable and will retain a usable level of power to last for days once charged. Overcharging protection incorporated. This near vision disparity unit combines a wide range of tests for refraction and ocular motor investigations at near. The unit is supplied with polarisation set at 90° x 180°, or 45° x 135° for the UK and Export markets respectively. Supplied complete with the Maddox green twirl and the polarised visor. W30 x H12.5 x D2cm. Weight: 550g.

The tests incorporated are:

- Fixation Disparity
- Polarised Dichromic
- Stereopsis
- Tangent Scale and Spot
- V.A. Charts
- Polarised Foveal Suppression
- Arc & Suppression in Strabismus
- Polarised 'X' Cyl. Target & V.A. Balance
- N5- N12 Reading Fonts
- Near Point Convergence
- Dominant Eye & Accommodation Convergence Relationship
- Measurement of Monocular Amplitude of Accommodation, under Binocular conditions.

Specially designed for use in the normally darkened conditions of the testing room.



◀ Charging Bracket

Ref: NVP 310C

A smart and convenient way of parking and charging the Near Vision Pad. Incorporates protection against overcharging. This ensures that the Pad is ready for use at any time and that it will be at optimum working power. Screws provided for wall attachment.



### ▲ Adjustable Four Lens Confirmation Test

Available in either +/- 0.25 set Ref: **AFL25**, or +/- 0.50 set Ref: **AFL50** (pairs of each opposite signs). Adjustable settings.



### ▲ Fixed Four Lens Confirmation Test

Available in either +/- 0.25 set Ref: **FFL25** or +/- 0.50 set Ref: **FFL50** (pairs of each opposite signs).



### ▲ Two Lens Confirmation Test

Available as either +/- 0.25 Ref: **TLT25** or +/- 0.50 Ref: **TLT50**



### ▲ Cross Cylinder

Single, 0.25 Ref: **CC25**, 0.50 Ref: **CC50**, 0.75 Ref: **CC75**, or 1.00D Ref: **CC1.0** cyls. Please state powers required.



### ▲ Set of Cross Cylinders

Ref: **SCC**  
One 0.25D, and one 0.50D. Aperture 36.5mm. Outside diameter 38mm. Supplied in black plastic box.



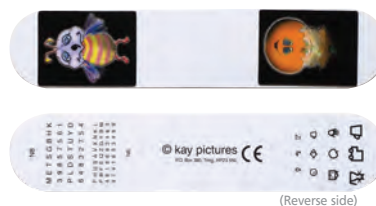
### ▲ Versatile Lens Twirl & Flip

Ref: **SCT4710E**  
Acetate white twirl -0.75/-1.25 sphere in box.



### ▲ Kay Fixation Sticks

Ref: **237**  
Set of three double sided. Dimensions: 155 x 33mm.



### ▲ Kay Animated Stick

Ref: **237A**  
Double sided. Dimensions: 155 x 33mm. With two 'animated' holograms on front.



### ▲ Budgie Stick

Ref: **238**  
Double sided. Dimensions: 147 x 17mm.





▲ Romanes Occluder

Ref: 761

This simple occluder is a useful trial case accessory. Primarily used as an occluder but can also be used to assess visual acuity and in the cover test.



▲ Freeman Occludarule

Ref: 503

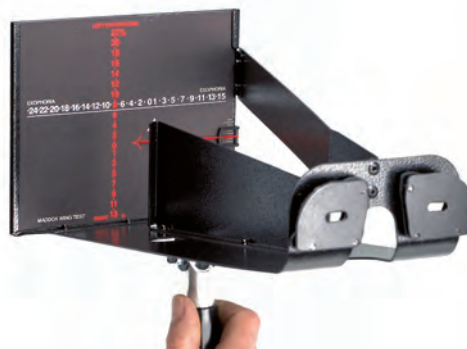
This versatile dispensing rule covers all the needs of essential frame and facial measurements as well as occlusion and fixation. White both sides. Supplied in a protective case.



▲ Spectacle Pinhole Occluder

Ref: 279

This spectacle occluder is made of high impact resistant plastic. It features a multiple pinhole flipper that can be moved out of the way to observe the subject eye. The angled head keeps the patient's hand clear of the face. Can be sterilised with any non solvent based germicide.



▲ Maddox Wing Test

Ref: 248

This instrument provides a quick & efficient near test. Heterophoria, horizontal, vertical deviations and the cyclophoria are made without any change of position and are indicated on one chart.



▲ Prism Bars in Case

Vertical prism to 30 dioptres Ref: VB15

Horizontal prism to 45 dioptres Ref: HB16



▲ Penlight

Ref: PL

Uses 2 x AAA batteries (supplied).



### ▲ HT Gauge

Ref: WE260

Professional tool to measure the patient's head width and temple lengths. Very easy to use. Non-invasive of patient's space enabling a face-to-face position at all times rather than moving around with a ruler. Solid build quality with clear scales in mm.



### ▲ Temple Width Calipers

Ref: TWC

Measures both temple and head width. Comfortable for the patient. Red dots to indicate spectacle plane position.



### ▲ R.A.F. Binocular Gauge

Ref: 235

The Binocular gauge is used for determining the objective and subjective convergence points, examining the accommodation and determining the master eye.



### ▲ Vertex Distance Gauge Set

Ref: VDG

Contains gauge to measure lens to eye distance and conversion disc.



### ▲ Lens Thickness Caliper

Ref: OU102

38mm throat to measure up to 19mm lens thickness. Graduated in 2/10mm steps.

Spare nylon tips (pair) Ref:



### ▲ Jumbo Lens Thickness Caliper

Ref: JLC

45mm throat. Measures up to 23mm lens thickness. Vernier scale giving easy to read 1/10mm accuracy. Will accept lenses up to 90mm in diameter. Spare tips and springs available.



### ▲ Lens Thickness Gauge

Ref: 2060

Constructed of corrosion resistant brass and stainless steel. Has extra wide and deep jaws for use on lenses up to 86mm in diameter. Scale is in 1/10th millimeter. Soft spring and "delrin" tipped jaws are designed to protect soft lens material.



### ▲ Digital Caliper

Ref: CT41003

Durable stainless steel construction. 150mm/6" reads 0.1mm/0.005". Zero setting at any position, auto power off. Easily read display. Complete with hard carrying case. Replacement 1.5v button battery





▲ Digital Thickness Gauge

Ref: DTG

This new digital thickness gauge gives an accurate readout of the lens' edge or centre thickness. Comes with its own box.



▲ Digital Curve Clock

Ref: DBCC

This new digital base curve clock permits you to select the lens' correct refractive index before measuring its front and back curve. Measures 1.49 / 1.53 / 1.56 / 1.59 / 1.61 / 1.67 / 1.71 / 1.74. Comes with its own box.



▲ Dual Index Lens Measure

Ref: LM1.49

Dual refractive index 1.49 & 1.60 readings. Plus and minus measuring in 0.25 steps up to 20.00D. Storage box.



▲ Digital Curve Thickness Gauge 2 in 1

Ref: GP-DG002

Digital curve thickness gauge measures lens curve and centre thickness.



▲ Traditional Lens Measure

Ref: LM1.53

N= 1.53. Plus and minus measuring in 0.25 steps up to 20.00D. Storage box.



▲ **Pedestal Mirror**

Ref: 771617G

Plano / x7 magnification, 30cm high. Colour: chrome or gold. Comes in three pieces (mirror, base and column) for easy self assembly.



▲ **Pedestal Mirror**

Colours - Rose Gold Ref: 5526/15RG,

Chrome Ref: 5526/15C

Plano / x5 magnification, 285mm high, 150mm diameter. Comes in three pieces (mirror, base and column).



▲ **Pedestal Mirror**

Plano / x3 magnification, 335mm high,

150mm diameter. Colour: Nickel.

Ref: 3501/15N



▲ **Plastic Hand Mirror**

Reading chart on one side, flat mirror on reverse. Size: 70 x 350mm.

Dark Green Ref: PMDG, Red Ref: PMRD, Light Grey Ref: PMGY,

Blue Ref: PMBL, Brown Ref: PMBR



▲ **Clear Plastic Hand Mirror with Reading Chart**

Ref: 404C

Reading chart on one side, mirror on reverse. Size: 330 x 130mm.



▲ **Stand Mirrors**

170mm Round (mirror 150mm diameter), 200mm high. Plano / x5 magnification.

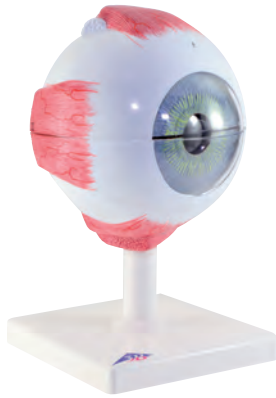
Available in Smoke - Ref: 919S and Red - Ref: 919R



▲ **Free Standing Chrome Mirror**

Ref: 132/25

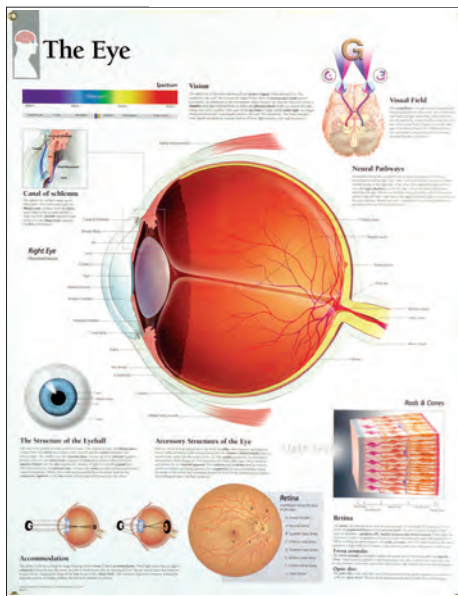
Plano mirror. Overall height: 25.5cm, mirror: 21 x 19cm



▲ **Eyeball on Stand**

Ref: VJ500C

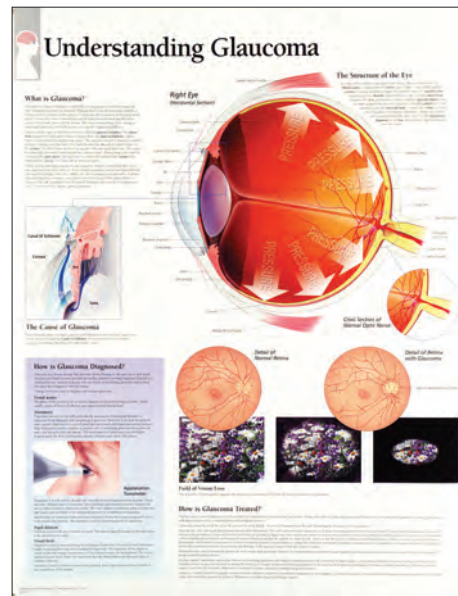
Manufactured to scale, with removable items for teaching. 'Eyeball' is to larger scale, whilst the 'Eye and Orbis' shows muscle and optic nerve detail.



▲ **The Eye**

Ref: EYEP

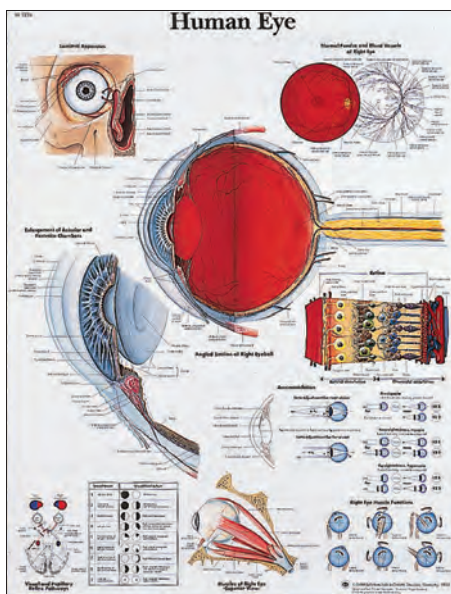
High quality gloss finish charts. Laminated. Size: 712mm x 558mm.



▲ **Understanding Glaucoma**

Ref: GLAUCO

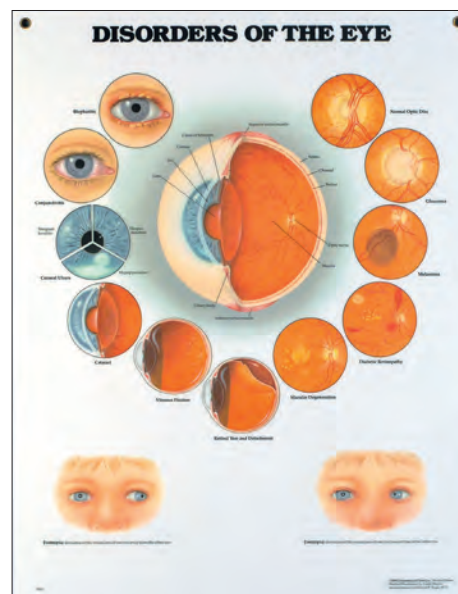
High quality gloss finish charts. Laminated. Size: 712mm x 558mm. .



▲ **Human Eye**

Ref: VR1226

High quality gloss finish charts. Edged with black nylon runners. Size: 66 x 50cm



▲ **Disorders of the Eye**

Ref: FRADISCH

High quality gloss finish charts. Brass fittings for hanging. Laminated on both sides. Size: 66 x 50cm.



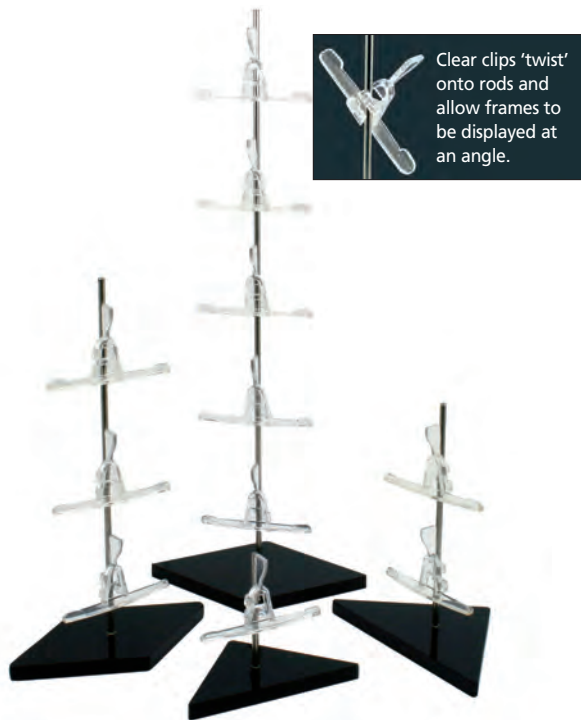


## Clipper & Twister



### ▲ Clipper Wall - Metal rods

Attractive and versatile. In gold or chrome finish. 100cm lengths with brackets for wall fitting, can also be ordered to special lengths.  
Price includes: 12 of either 'Clip', 'Mobile' or 'Nasal' holders (please specify).  
Gold 100cm - Ref: CWMG1  
Chrome 100cm - Ref: CWMC1



Clear clips 'twist' onto rods and allow frames to be displayed at an angle.

### ▲ Twister Clip Displays

Polished aluminium rods in black acrylic base. Available in four standard lengths -  
Single clip 85mm Ref: TCFD1,  
2 clip 155mm Ref: TCFD2,  
3 clip 230mm Ref: TCFD3,  
5 clip 380mm Ref: TCFD5



### ▲ Cradle Clip

Single clip 85mm  
Ref: CCT



### Clipper Holder Options

#### ◀ The Nasal Ref: CHON

Small, unobtrusive clip which hold frames by the bridge only.

#### ◀ The Mobile Ref: CHOM

An adjustable alternative. Can be rotated on ratchet to display frames at unusual angles.

#### ◀ The Clip Ref: CHOC

The original holder. Can be ordered separately to add to clipper poles.

#### ◀ The Clip 2 Ref: CHOC2

Similar to 'The Clip' but is swept back to suit wrap-round style frames and sunspecs.



### ▲ Clear Clipper

Clear perspex rods. Particularly attractive finish. Can be wall or slat wall mounted. Comes with choice of fitting; either 'Clip', 'Mobile' or 'Nasal' holders (please specify). Available in three standard lengths -

6 clip 60cm - Ref: CC6,  
10 clip 90cm - Ref: CC9  
14 clip 120cm - Ref: CC12

Or special lengths to order. Ask for a quote for practice refit quantities.



### ▲ Wing Clip

Single clip 85mm  
Ref: DC1-Y4

## Slat Wall



### ▲ Small Display Shelf

Ref: SWS

Clear acrylic flat shelf. W25cm x D15cm.



### ▲ Large Display Shelf

Ref: SWL

Clear acrylic with front lip. W60cm x D17.5cm.



### ▲ Case Display

In clear acrylic to hold three or five cases.

3 Case Display Ref: SWC3

5 Case Display Ref: SWC5



### ▲ Single 'A'

Ref: SWSA

Clear moulded plastic. Displays frame with sides folded.



### ▲ Double 'A'

Ref: SWDA

Displays two frames with sides folded. Does not protrude as far as four 'A', so is useful for narrow display areas.



### ▲ Solo Frame Holder

Ref: SWSO

Clear, neat display for single frames.



### ▲ Leaflet Dispensers

Clear acrylic leaflet dispensers in three sizes:

A4 Ref: SWLD4

A5 Ref: SWLD5

1/3 A4 Ref: SWLD134



### ▲ Four Tier Leaflet Dispenser

Ref: SWFT Price: £12.95

Clear acrylic to hold four levels of 1/3 A4 leaflets.



### ▲ Display Bars

For vertical frame display. Aluminium tube available in sizes 900mm and 1200mm. M900 holds 8 pieces, M1200 holds 12 pieces.

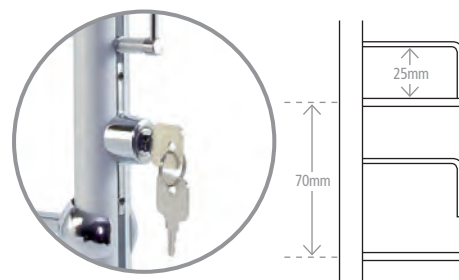
Ref: CT01-M900 and Ref: CT01-M1200



### ▲ Security Display Bars

For the secure display of valuable frames. Aluminium tube available in sizes 900mm and 1200mm. M900 holds 8 pieces, M1200 holds 12 pieces.

Ref: CT01-M900-1 and Ref: CT01-M1200-1







▲ 4 Clip Slope

Ref: CS1  
Takes four frames on clear clips, set onto 'glass effect' plastic.



▲ 6 Clip Slope

Ref: CS2  
Takes six frames on clear clips, set onto 'glass effect' plastic.



▲ Key ring Screwdriver Stand

Ref: KSS  
20 screwdrivers included. Key ring screwdrivers are also available as a separate item Ref: KSD.



▲ Vertical Display

Clear plastic. To take A4 leaflets.  
Ref: VD4



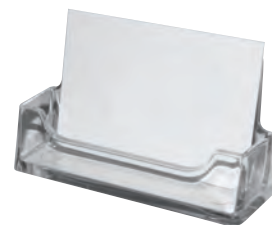
▲ Vertical Display

Clear plastic. To take A5 leaflets.  
Ref: VD5



▲ Individual Leaflet Dispensers

Free standing or wall mounted. Single compartment to display:  
1/2 A4 Ref: LD134  
A5 Ref: LD5,  
A4 Ref: LD4



▲ Business Card Holder

Ref: BCH  
Acrylic. Max card 90mm wide.



▲ Frame Tray

Ref: FT2  
Holds 20 frames - for use under/on shelves or as drawer inserts. White plastic. W65cm x D30cm x H4cm.



▲ Six Frame Tray (Plastic)

Ref: FT1  
For six pieces.



▲ Giant Display Specs

Ref: GDS  
Eyesize 200mm x 150mm deep, PD 280mm, Sides 400mm to bend! Maroon with gold trims.



▲ White Rims

Ref: WR  
White plastic. For individual demonstrators.



▲ Crystal Rims with Handle

Ref: CRH  
Crystal plastic carrier with handle for 55mm lenses.



▲ Empty Round Lorgnettes

Takes lenses edged to 55mm.  
Black acrylic Ref: LERB  
Clear acrylic Ref: LERC  
White acrylic Ref: LER



▲ Empty Oval Lorgnettes

53mm eyesize.  
Black acrylic Ref: LEOB  
Clear acrylic Ref: LEOCL  
Cream acrylic Ref: LEOCR



▲ Single Lens Display Unit

Ref: SLDU  
Black acrylic. Photo mount top panel. Five clear lens mounts.



### ▲ Magna Clip Holder

Compact unit holding 20 magna clips. Fits C8122 frame. Also available empty.

- Standard set Mono Ref: **Mag Set Std**
- Special set Mono/Grad Ref: **Mag Special**
- Standard set + PLS Ref: **Mag Std/PLS**
- Standard set + Sports Ref: **Mag Std/Sports**



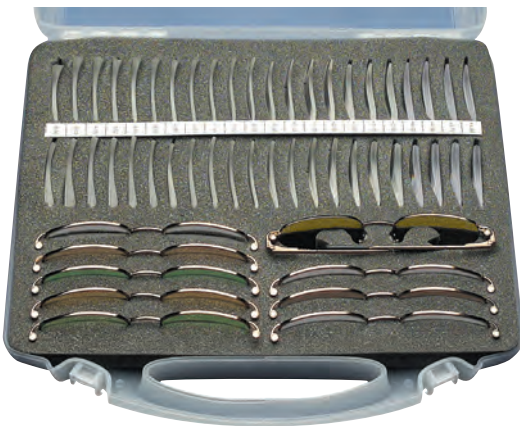
### ▲ Magnetic Clip Display

Holds 10 magna clips. Size: 31 x 24cm. Made of white acrylic. (supplied without clips) Ref: **Mag Display 2**



### ▲ Magnetic Tint Sample Tree

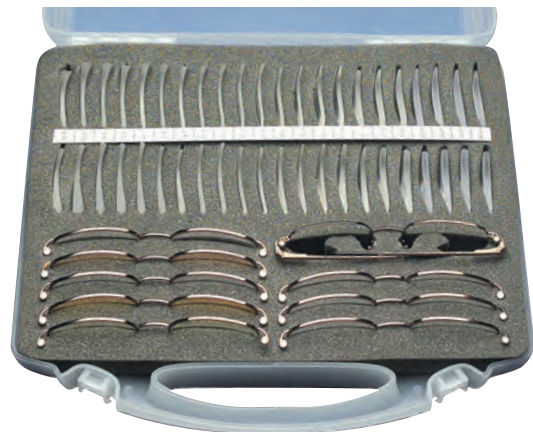
Set of 12 rims Ref: **Set MTST12**. Tint samples held in rings are displayed on magnetic 'poles'. Brushed aluminium finish. Available individually: Ref: **Set MTSR**. Magnetic Sample ring for use with the tree. 55mm diameter.



### ▲ Versatile Enhanced Near Vision (Degressive Lens) Demonstration Set GOLD Set A Ref: **Set A**

Comprising of a C8122 magna frame with 22 pairs of cut lenses +/- spheres from 0.50DS to 5.50DS, together with four magnetic clip-ons glazed with MAR coated -0.75 -1.25 -1.75 -2.25 degressive powers, and a further four clips glazed with plano Dot Com MAR workstation tints.

- One magna frame
- Four versatile clips -0.75 -1.25 -1.75 -2.25 degressives
- Four Dot Com office tint clips
- 22 pairs of meniscus RF coated



### ▲ Drivewear Sunwear Demonstration Set

Ref: **Set C**

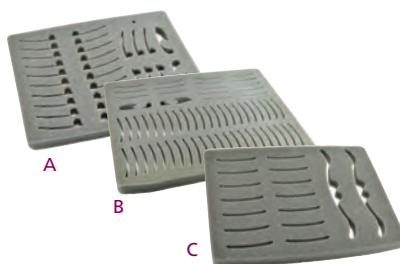
Comprising a C8122 magna frame with 22 pairs of shaped lenses +/- spheres from 0.50DS to 5.50DS in 0.50 steps, together with nine magnetic clip-ons - three glazed with standard CR39 brown, grey and green LTF 15%, and a further three glazed with INAR standard CR39. With two Polarised INAR in grey and brown. Also one Drivewear INAR.

For further information on other demonstration sets, contact Telesales on 01452 510321



### ▲ Demonstration Case - Large

Ref: **001-74-14**  
Supplied empty



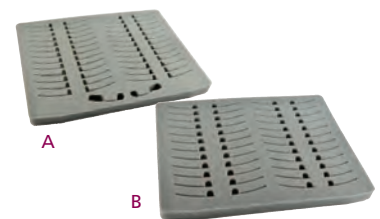
### ▲ Demonstration Case Foam Inlay - Large

For large demonstration case.  
Ref: **DCFIL-A**  
Ref: **DCFIL-B**  
Ref: **DCFIL-C**



### ▲ Demonstration Case - Small

Ref: **95-74-04**  
Supplied empty



### ▲ Demonstration Case Foam Inlay - Small

For small demonstration case.  
Ref: **DCFIS-A**  
Ref: **DCFIS-B**



▲ **Label Printer Tape Cassettes**

Allows the text to be clearly displayed on demonstration lenses. Types of tape available:

- Black on clear 6mm deep Ref: CBC6
- Black on clear 9mm deep Ref: CBC9
- Black on clear 12mm deep Ref: CBC12
- Black on red 6mm deep Ref: CBR6
- Black on red 9mm deep Ref: CBR9
- Black on red 12mm deep Ref: CBR12
- Black on white 6mm deep Ref: CBW6
- Black on white 9mm deep Ref: CBW9
- Black on white 12mm deep Ref: CBW12
- Black on silver 9mm deep Ref: CBS9
- Black on blue 12mm deep Ref: CBBU12



▲ **Pricing Gun**

Ref: PGY  
 Uses OD02 pricing labels. Prices up to £999.99.  
 Roll of labels included.  
 Spare ink rollers available, two diameters:  
 PG/R23 23mm  
 PG/R25 25mm



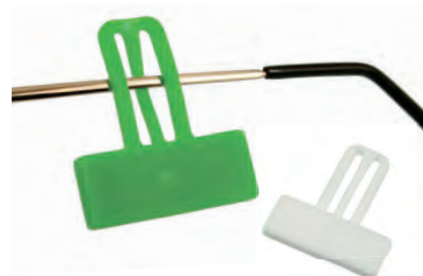
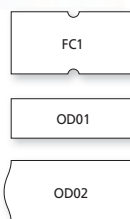
▲ **Casio EZ Label Printer**

Ref: CLP  
 Hand held label printer. Prints onto cassette. Able to price in dual currency, calculating the exchange conversion. 12mm wide print head which supports 12mm, 9mm and 6mm tape sizes. Large easy to read 16-digit, 2-line LCD display. Print preview function. Creative label making function (setting tape length, character pitch, letter align, printing number setting). One 12mm tape cartridge included free. Uses 6 x AA batteries (not supplied). Additional batteries Ref: MN1500



▲ **Pricing Gun Labels**

Use directly on frames or tags.  
 Permanent adhesive. Packs of 1,000.  
 Size - 22 x 12mm Straight ends:  
 White - Ref: FC1  
 Size - 22 x 7mm Straight ends:  
 White - Ref: ODO1W  
 26 x 12mm Curved ends:  
 Blue - Ref: ODO2B, Green - Ref: ODO2G,  
 White - Ref: ODO2W



▲ **Handy Tags**

White Ref: THW or Green Ref: THG  
 Suspended type of tag. Supplied in packs of 100 or 1,000 with white OR6 labels.



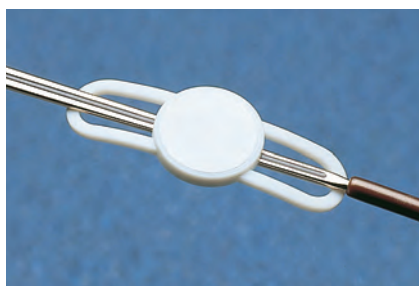
▲ **Pricing Labels - Coloured**

Permanent adhesive. Packs of 1,000.  
 OR6 Size - 22 x 11mm.  
 White - Ref: OR6W, Green - Ref: OR6G, Red - Ref: OR6R,  
 Blue - Ref: OR6B, Yellow - Ref: OR6Y  
 OC1 Size - 13mm round.  
 White - Ref: OC1W, Green - Ref: OC1G, Red - Ref: OC1R,  
 Blue - Ref: OC1B, Yellow - Ref: OC1Y



▲ **Rectags**

White Ref: TRW or semi-opaque Ref: TRC plastic with rectangular label plaque. Supplied in bags of 100 with white OR6 labels or bags of 1,000.



▲ **Propeller Tags Ref: TPW**

White plastic with circular label plaque. Supplied in bags of 100 with white OC1W labels, or bags of 1,000.





▲ **3-Compartment Rx Job Trays - Small & Large** Three compartments, easy to stack. Supplied with clear tag. Available in four colours.

	Small: W172 x L250 x D40mm	Large: W190 x L265 x D45mm
Orange	Ref: CT007SO	Ref: CT007LO
Yellow	Ref: CT007SY	Ref: CT007LY
Crystal	Ref: CT007SC	Ref: CT007LC
Blue	Ref: CT007SB	Ref: CT007LB



▲ **Extra Sturdy Laboratory/Dispensing Trays** Stacked trays interlock for secure transporting. Large tray tag slot for easy reference. 1x white tag supplied with each tray. Size: W157 x L230 x D40mm. Available in six 'organising' colours: Green Ref: WE/181, Yellow Ref: WE/182, Red Ref: WE/184, Blue Ref: WE/184A, White Ref: WE/196, Black Ref: WE/197.



▲ **Lens Storage Box/Cabinet Dividers**

Separates stock, available in six colours:

Blue Ref: WE/80, Orange Ref: WE/80A, White Ref: WE/80B, Green Ref: WE/80C, Yellow Ref: WE/80D, Red Ref: WE/80E



Light Blue Ref: WE/186A, Mid Blue Ref: WE/186, Orange Ref: WE/187, White Ref: WE/188



Light Green Ref: WE/189, Dark Green Ref: WE/189A, Yellow Ref: WE/190, Red Ref: WE/191

▲ **Mini Tags**

For colour coding of job trays. Can be used for daily prescriptions, Monday – Sunday. Size approximately 25mm square. Also available for use with mini tags: Velcro Adhesive-backed hook and loop fastener Ref: 800/14/24 12 mtr lengths



▲ **Additional Tray Tags**

Order as individual tags. Ref: WE/184B



▲ **Single Lens Packet**

Size: Packed x 100. Ref: NO100



▲ **Double Lens Packet with flap**

Size: 95 x 180mm Packed x 100. Ref: NO112



▲ **Foam Lens Pouch**

Size: Packed x 100. Ref: FLP003



▲ **Foam Frame Pouch**

Size: Packed x 100. Ref: FFP001



▲ Lens Marking Ink

Water soluble. Does not cake. 4oz bottles. Choice of colours: Red - Ref: WE/1, Yellow - Ref: WE/2, Black - Ref: WE/27, White - Ref: WE/28.



▲ Alcohol Dispenser

Ref: CT 8702  
Pump action top. 50ml capacity.



▲ Focimeter Printer Paper

57mm wide x 50mm diam. Ref: PR50



▲ Refill ink

Ref: LS2/LD-1



▲ Chinagraph pencil

Available in Red - Ref: OS14, White - Ref: OS15, Yellow - Ref: OS40, Black - Ref: OS41



▲ The white pen pupil marker Ref: WPP

Pupil Marker's acid free white dot is designed to show up distinctly in front of the background of the patients black pupil. It can also be used to mark engravings on a polarised or darkly tinted progressive lenses. Available individually, box of 3, box of 5, box of 12.



▲ Wet Erase Chalk Marker

Water soluble marker. 2mm felt taper tip. Ref: OS38



▲ The Eliminator Marking Ink Removal Pen

Removes any progressive lens marks. Acetone free. Safe on polycarbonate lenses. Instant dry, no oily residue. Ref: INKOFFpen



◀ Eliminator Marking Ink Removal Liquid

Eliminator - the safest and easiest Marking Ink Removal liquid ever created. Now you can easily remove the toughest lens markings quickly from Polycarbonate, Trivex, High-Index and CR39 lenses without leaving an oily residue. Eliminator is the culmination of years of extensive research and testing designed to create a safe and effective way to remove progressive markings from lenses. 4oz Ref: 99-AO4, 16oz Ref: 99-AO



▲ The original Pentel Sign Pen

Water soluble marker. 2mm felt taper tip. Black - Ref: OS7, Red - Ref: OS38



▲ Permanent marker

Nylon taper tip. Black - Ref: SL318-9, Red - Ref: SL318-2  
Available individually, box of 5, box of 10.



▲ Norville Autoflow permanent marker

Ref: MarkOn Extra fine tip. Ideal for marking hydrophobic top coats. Instant drying. 1mm metal collar, black only.



▲ RF Special permanent marker Ref: SL319-9

Designed to avoid beading or smudging on RF coated lenses, quick dry. 2mm nylon taper tip, black only. Available individually, box of 5, box of 10.



▲ Rimless dot marker Ref: RM1

Dot through the holes of dummy lenses for spot-on accuracy. 1mm metal collar, black only.



▲ Rimless Dot marker Ref: RM2

Dot through the holes of dummy lenses for spot-on accuracy. 1mm metal collar, black only.

## SEEGREEN Colour Match Lens Dyes

Can be used individually or as part of the colour match system. Fade resistant, can treat over 200 pairs of lenses. Wide colour choice - see below. 4oz bottles.

					
<b>MIDNIGHT BLACK</b> CM4/MB Ref: WE/10	<b>COCOA BROWN</b> CM4/CB Ref: WE/10A	<b>TRUE GREY</b> CM4/TG Ref: WE/10B	<b>BLUE</b> CM4/BL Ref: WE/11	<b>SAHARA BROWN</b> CM4/SB Ref: WE/11A	<b>CRUXLITE</b> CM4/CX Ref: WE/11B
					
<b>RICH BROWN</b> CM4/RB Ref: WE/12	<b>G15 (B&amp;L)</b> CM4/G15 Ref: WE/13	<b>GREEN</b> CM4/GN Ref: WE/14	<b>DARK GREY</b> CM4/DG Ref: WE/15	<b>CHARCOAL GREY</b> CM4/CH Ref: WE/15A	<b>NO RED GREY</b> CM4/NR Ref: WE/15B
					
<b>LILAC</b> CM4/LC Ref: WE/16	<b>PINK</b> CM4/PK Ref: WE/17	<b>ROSE</b> CM4/RS Ref: WE/18	<b>SOLAR BROWN</b> CM4/SB Ref: WE/19	<b>AQUA</b> CM4/AQ Ref: WE/20	<b>YELLOW</b> CM4/YW Ref: WE/23
				<div style="border: 1px solid green; padding: 5px;"> <p>ALL SEEGREEN PRODUCTS are environmentally safe. They biodegrade into harmless and nontoxic elements in either water or land fill sites when disposed of. They meet the strict U.S. legislation on waste disposal and are ideal for meeting our own COSHH regulations.</p>  </div>	
<b>DARK BROWN</b> CM4/NBN Ref: WE/102A	<b>RED</b> CM4/RD Ref: WE/108	<b>ORANGE</b> CM4/OR Ref: WE/109	<b>AUBURN BROWN</b> Ref: WE/11D		



					
<b>AO Cosmalite</b> Ref: WE/340	<b>Aviator Grey</b> Ref: WE/341	<b>B&amp;L G15</b> Ref: WE/342	<b>Jet Black</b> Ref: WE/343	<b>Supershield Dk Brown</b> Ref: WE/344	<b>Swiss Chocolate</b> Ref: WE/345
					
<b>Rose</b> Ref: WE/346	<b>540 Brown</b> Ref: WE/347	<b>UV Blue 480 Filter</b> Ref: WE/348	<b>Therapeutic FL41</b> Ref: WE/349	<b>Black</b> Ref: WE/350	<b>Red</b> Ref: WE/352
					
<b>Yellow</b> Ref: WE/353	<b>Blue</b> Ref: WE/354	<b>Melanin</b> Ref: WE/355	<b>Grey XP</b> Ref: WE/356	<b>Brown XP</b> Ref: WE/357	<b>Sun Green</b> Ref: WE/358
					
<b>Supershield Grey</b> Ref: WE/359	<b>Deep Red</b> Ref: WE/360	<b>AO Tru Tone</b> Ref: WE/361	<b>Teal</b> Ref: WE/362	<b>Sun Grey</b> Ref: WE/363	





▲ **Ver.O.glass**  
1 Litre bottle Ref: **WE/120**  
A special cleaner designed to remove all marks from organic glass before colouring and to provide perfect pigment distribution.



▲ **Dye Out Hand Cleaner**  
8 fl oz. Ref: **WE/143**  
Hypo-allergenic formula removes lens dye stains from hands. Won't hurt sensitive skin. People and environment safe.



▲ **Dye Pot Cleaner**  
32 fl oz. Ref: **WE/29**  
Never scrub dye pots again! Emulsifies old dyes from cracks and pores. Leaves a protective barrier to help block dye from entering the pores of dye pans, reduces contamination.



▲ **UV Block**  
32 fl oz. Ref: **WE/5**  
Provides protection against 98% of UV to 400nm. Bottle treats over 200 pairs of lenses.



▲ **UV+ Scratch Resistant Coat**  
32 fl oz. Ref: **WE/5C**  
Blocks 99.5% of UV to 400nm while adding scratch resistance. Bonds permanently to lenses. Requires maintained heating to 210°F. Treats more than 400 lenses.



▲ **No-Bake Scratch Resistant Coat**  
32 fl oz. Ref: **WE/134**  
Offers oven-cured performance without the oven. Provides effective scratch resistant coating from your dye tank. Treats lenses in 10 minutes, dry for 10 minutes. Treats more than 200 pairs of lenses



▲ **Heat Transfer Fluid**  
32 fl oz. Ref: **WE/24**  
Completely odourless, nontoxic and readily biodegradable. Provides faster and more consistent heating throughout the dye tank. Does not evaporate. Safe disposal. Also available: Gallon Ref: **WE/22**



▲ **Neutraliser**  
32 fl oz. Ref: **WE/3**  
Removes colour from all CR39, Polycarbonate or high index lenses, coated or uncoated. Odour-free and non-flammable. Also available: Gallon size (128 fl oz.) - Ref: **WE/3A**



▲ **Pyrex Beakers**  
50ml - Ref: **BNB-385-010K** 100ml - Ref: **BNB-385-030E**  
150ml - Ref: **BNB-385-050V** 250ml - Ref: **BNB-385-070P**  
400ml - Ref: **BNB-385-090J** 600ml - Ref: **BNB-385-110G**  
800ml - Ref: **BNB-320-215S** 1000ml - Ref: **BNB-385-130A**



▲ **Tint Tank Accessories**  
Lid Ref: **WE/142A**  
Pyrex Beaker 1000ml Ref: **SPTU/45**, Lens Holder with lid Ref: **WE/142**. Also available (not shown): 'O' Rings Ref: **SPTU/46**



▲ **Graduating Arm**  
Ref: **MC/015**  
Robotic graduating arm to assist with tinting lenses. Compatible with BPI tint baths.



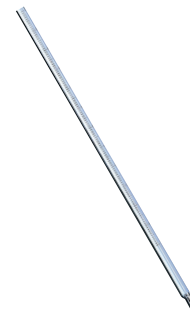
▲ **Standard lens holder**  
Ref: **WE/228**



▲ **UV lens holder. White**  
Ref: **WE/230**



▲ **Slant lens holder**  
Ref: **WE/231**



▲ **Thermometer**  
Ref: **SPTU/54**  
Dual scale, -10 to 110°, 0 to 250°



### ▲ Multi-function UV Lens Tester

Ref: 888-06

This small, simple practice-based UV demonstration unit is a must for all practices, allowing you to confirm the lens product you are supplying conforms to your requirements, offering better or complete UV protection. Lens UV testing facility. Digital readout. Red/green light quick check.



### ▲ PD Meter (The Pupilometer)

Ref: CT4113

The Pupilometer is a digital precision optical instrument used to measure distance between human pupils in the process of optometry for fitting spectacles. This device is designed in a scientific and reasonable way, intergrating technologies on mechanical hairspring orientation measurement system, optical system, ESS and microcomputer into a whole.

- Using mechanical hairspring to level at the reflecting point of human cornea to realise the consecutive measurement. It features directness of point sampling and high accuracy of orientation.
- Adopting line-shaped sensors of high definition, advanced intellectualised electronic systems and digital display which allow the testing results more visible, legible and accurate.
- LED lamp-house and design of low power consumption ensure the prolonged service life of batteries.
- It offers the +2.00m compensation for the degree of eyesight.
- The brightness of LED lamp-house is adjustable.



### ▲ Hand Held Focimeter

Ref: 529

Battery operated, fully portable. Case can be used as stand. Power range  $\pm 15.00D$ . Accommodates up to 80mm diameter lenses. Detachable frame table. Lens marking device.



### ▲ Photochromic Lens Demonstrator

Ref: 21011

Activates photochromic lenses, both uncut and glazed. Mains operated.



### ▲ Polarising Axis Verifier Gauge

Ref: PAVG

ISO BSI Standard allow  $+5^\circ$  as the glazing axis tolerance for polarising lenses, that is the axis of polarisation rather than the glazed cylinder axis. Paddle also available separately.



### ▲ Strain Tester

Ref: WE79

Hand held.

### Magnon Spares



#### ▲ Ink cartridge marker unit.

Ref: LM770/0

Magnon code: 30281-3230



#### ▲ Ink cartridge unit

Ref: LM770/08

Magnon code: 30281-3261



#### ▲ Rubber top Nosepiece

Ref: LM770/07

Magnon code: 30281-M3237



#### ▲ Spares for Topcon LM-8 Focimeter

- 1 Black ink Ref: LS2/LD
- 2 Red ink Ref: TCR
- 3 Ink pad Ref: WE/247
- 5 Eyepiece rubber Ref: 098750
- 6 Lens stop Ref: 31381
- 7 LM-8 marking unit (set of 3) Ref: WE/246A



#### ◀ TOPCON LM-8 Focimeter

Ref: MC/057

Available as:

LM-8 - Crossline target.

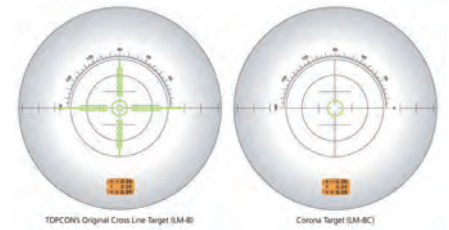
LM-8C - Corona target.

An optional prism compensator is also available to measure from 5 prism dioptres to 14 prism dioptres in 1 dioptre steps.

Create barcode

Battery operated

Prism compensator - Ref: MC/057A Pr / LM-S1/8/8C  
A/C Adaptor







### ▲ Maga S Frame Heater

Ref: A200S

Frame heater with quiet operation and powerful heating properties.

- Choice of two electronically controlled temperature settings:
  - 65°C to 90°C for acetate frames
  - 130°C to 170°C for Optyl frames or quick heating
- Prevents burning the frame
- Spot heating for nose bridge or temples
- Cold air option
- Mounting platform to position frame with both sides in contact with hot air flow
- Dimensions: D 315 x W 190 x H 215 mm (D 12.4 x W 7.5 x H 8.5 in)
- Weight: 2.60 Kg (5.73 lbs)
- Voltage : 240V/50Hz
- Power: 5.5 A



### ▲ Norville Autoflow

Ref: NH 320-F

Power and heat buttons. Adjustable heat settings. 600W. With additional funnel cup.



### ▲ CD-4800 Ultrasonic Cleaner

Ref: CD4800

Hard plastic body, Stainless steel tank, see-through lid, cooling fan.

- Moulded work basket
- Timer range: 0-99 mins
- Working capacity: 1.4 litres
- Operating frequency: 42 KHz
- Overall: 230 x 180 x 160mm high
- Weight: 1.75Kgs



### ◀ NR24 Cleaning Solution

Ref: WE212

For use with all ultrasonic cleaners. 1 litre bottle.



### ▲ Ventilette 3 Ref: 286122

Basic model. On/off, Hot/cold. 230V, 450W

### Ventilette 3 Spare Parts



#### ◀ Rocker Switch, Interruptor

Black Ref: 2861 30

Red Ref: 2861 31

#### ◀ Heating Element

Ref: 2861 52

230 volts. For order no. 2861 22

#### ◀ Plastic Beaker

Ref: 2861 60

With temperature and spot heating shutter.

For order no. 2861 22

#### ◀ Switch

Ref: 2867 30

For order no. 2867 / 2869 22

#### ◀ Carbon Brushes

Ref: 2861 96

Set of 2

All screws, nuts, washers and bushes are supplied in packs of 100

CODE	LENGTH	DIAMETER	COLOUR	HEAD
------	--------	----------	--------	------

**Pad Screws**

 ◀ <b>NOC002</b>	3.8mm	0.8mm	Silver	Slot
 ◀ <b>NOF186G</b>	3.8mm	0.8mm	Gold	Slot
 ◀ <b>NOF186S</b>	3.8mm	0.8mm	Silver	Slot

**Temple / Glazing / Pad Screws**

 ◀ <b>NOF184G</b>	3.0mm	1.0mm	Gold	Slot
 ◀ <b>NOF184S</b>	3.0mm	1.0mm	Silver	Slot

**Temple / Glazing Screws**

 ◀ <b>NOCSA</b>	4.5mm	1.2mm	Silver	Slot
Self Aligning Screw				
 ◀ <b>NOC007</b>	3.0mm	1.2mm	Silver	Slot
 ◀ <b>NOC008</b>	2.8mm	1.4mm	Silver	Slot
 ◀ <b>NOC009</b>	3.0mm	1.2mm	Silver	Slot
 ◀ <b>NOC013</b>	3.0mm	1.2mm	Silver	Slot
 ◀ <b>NOC014</b>	2.9mm	1.2mm	Silver	Slot
 ◀ <b>NOC016</b>	3.7mm	1.0mm	Gold	Slot
 ◀ <b>NOC017</b>	3.3mm	1.2mm	Silver	Slot
 ◀ <b>NOC018</b>	4.8mm	1.2mm	Silver	Slot
 ◀ <b>NOC021</b>	3.3mm	1.2mm	Silver	Slot
Threadlock				
 ◀ <b>NOC022</b>	2.4mm	1.2mm	Silver	Slot
 ◀ <b>NOC024</b>	3.3mm	1.2mm	Silver	Slot
 ◀ <b>NOC025</b>	3.3mm	1.2mm	Silver	Slot
 ◀ <b>NOC026</b>	2.9mm	1.2mm	Silver	Slot
Threadlock				
 ◀ <b>NOC027</b>	4.7mm	1.2mm	Silver	Slot
 ◀ <b>NOC028</b>	4.2mm	1.2mm	Silver	Slot
 ◀ <b>NOC030</b>	2.9mm	1.2mm	Silver	Slot
 ◀ <b>NOC032</b>	2.7mm	1.2mm	Silver	Slot
 ◀ <b>NOC033</b>	3.3mm	1.2mm	Gold	Slot
Threadlock				
 ◀ <b>NOC034</b>	3.8mm	1.2mm	Silver	Slot
Threadlock				
 ◀ <b>NOC036</b>	3.7mm	1.2mm	Silver	Slot
Threadlock				
 ◀ <b>NOF157</b>	5.1mm	1.2mm	Silver	Slot
 ◀ <b>NOF158</b>	4.3mm	1.4mm	Silver	Slot
◀ <b>NOF159</b>	4.4mm	1.4mm	Silver	Slot
◀ <b>NOF173</b>	4.8mm	1.2mm	Silver	Slot
◀ <b>NOF175</b>	3.1mm	1.2mm	Silver	Slot












CODE	LENGTH	DIAMETER	COLOUR	HEAD
------	--------	----------	--------	------

 ◀ <b>NOF176</b>	3.3mm	1.4mm	Silver	Slot
 ◀ <b>NOF180G</b>	3.5mm	1.2mm	Gold	Slot
 ◀ <b>NOF180S</b>	3.5mm	1.2mm	Silver	Slot
 ◀ <b>NOF181</b>	2.9mm	1.2mm	Gold	Slot
 ◀ <b>NOF182G</b>	3.7mm	1.2mm	Silver	Slot
 ◀ <b>NOF182S</b>	3.7mm	1.2mm	Gold	Slot
 ◀ <b>NOF188G</b>	2.8mm	1.2mm	Gold	Slot
 ◀ <b>NOF188S</b>	2.8mm	1.2mm	Silver	Slot






**Rimless Glazing Screws**

 ◀ <b>RG01</b>	14mm	1.2mm	Gold	Slot
 ◀ <b>RG08</b>	14mm	1.4mm	Gold	Slot
 ◀ <b>RS01</b>	14mm	1.2mm	Silver	Slot
 ◀ <b>RS08</b>	14mm	1.4mm	Silver	Slot

**Nuts & Washers**

 ◀ <b>RG02</b> Open Nut	1.2mm	Gold
 ◀ <b>RS02</b> Open Nut	1.2mm	Silver
 ◀ <b>RG09</b> Open Nut	1.4mm	Gold
 ◀ <b>RS09</b> Open Nut	1.4mm	Silver
 ◀ <b>RG06</b> Dome Nut	1.2mm	Gold
 ◀ <b>RS06</b> Dome Nut	1.2mm	Silver
 ◀ <b>RG11</b> Dome Nut	1.4mm	Gold
 ◀ <b>RS11</b> Dome Nut	1.4mm	Silver
 ◀ <b>RG03</b> Washer	1.2mm	Gold
 ◀ <b>RS03</b> Washer 1.2mm	Silver	
 ◀ <b>RG10</b> Washer	1.4mm	Gold
 ◀ <b>RS10</b> Washer 1.4mm	Silver	
 ◀ <b>RG07</b> Flat Plastic Washer 1.2mm		
 ◀ <b>RG04</b> Bush Washer	1.2mm	
 ◀ <b>RGN02</b> Grip Nut	1.2mm	Gold
 ◀ <b>RGN01</b> Grip Nut	1.2mm	Silver
 ◀ <b>RGN04</b> Grip Nut	1.4mm	Gold
 ◀ <b>RGN03</b> Grip Nut	1.4mm	Silver

CODE	LENGTH	DIAMETER	COLOUR	HEAD
------	--------	----------	--------	------

 ◀ <b>RGN05</b> Plastic Grip Nut		1.2mm	
 ◀ <b>RGN06</b> Plastic Grip Nut		1.4mm	
 ◀ <b>RGN07</b> Plastic Grip Nut Washer 1.2mm			
 ◀ <b>RGN08</b> Plastic Grip Nut Washer 1.4mm			
 ◀ <b>SGP</b> Superlite Glazing Plugs 1.4 or 1.8mm			



**▲ Screw Set**

Ref: TSS  
Unique pressure locking lid to avoid spills. 50 slot head screws each of 10 popular types. Diameter 90mm



**▲ Empty Dial Boxes**

Ref: SSB 90mm Diameter.  
Ref: LSB 110mm Diameter.



**▲ Pad Set**

Push on Ref: TSP-P, Screw on Ref: TSP-S  
Unique pressure locking lid to avoid spills. 10 pairs each of 5 pad types. Diameter 110mm



◀ **Acetate - D shape Metal centre**

17mm Screw fit. 5 prs. **NP001**  
18mm Screw fit. 5 prs. **NP002**

◀ **Silicone - D shape Metal centre**

17mm Screw fit. 5 prs. **NP003**  
19mm Screw fit. 5 prs. **NP004**

◀ **Silicone - D shape Plastic centre**

18mm Screw fit. 5 pairs. **NP005**  
18mm Push fit. 5 pairs. **NP006**

◀ **Silicone - D shape Plastic centre**

15mm Screw fit. 5 pairs. **NP009**  
15mm Push fit. 5 pairs. **NP010**

◀ **Silicone N - D shape Plastic centre**

17mm Screw fit. 5 pairs. **NP014**  
17mm Push fit. 5 pairs. **NP015**

◀ **Silicone - Symmetrical Plastic centre**

11mm Screw fit. 5 pairs. **NP018**  
11mm Push fit. 5 pairs. **NP019**

◀ **Silicone - Symmetrical Plastic centre**

13mm Screw fit. 5 pairs. **NP016**  
13mm Push fit. 5 pairs. **NP017**

◀ **Silicone - Symmetrical Plastic centre**

15mm Screw fit. 5 pairs. **NP028**  
15mm Push fit. 5 pairs. **NP029**

◀ **Silicone - Symmetrical Plastic centre**

17mm Screw fit. 5 pairs. **NP030**  
17mm Push fit. 5 pairs. **NP031**

◀ **Flexible PVC - D shape Plastic centre**

15mm Screw fit. 5 pairs. **NP032**  
15mm Push fit. 5 pairs. **NP035**

◀ **Flexible PVC - D shape Plastic centre**

17mm Screw fit. 5 pairs. **NP033**  
17mm Push fit. 5 pairs. **NP036**

◀ **Flexible PVC - D shape Plastic centre**

19mm Screw fit. 5 pairs. **NP034**  
19mm Push fit. 5 pairs. **NP037**

◀ **Flexible PVC - Oval Plastic centre**

13mm Screw fit. 5 pairs **NP038**  
13mm Push fit. 5 pairs **NP039**  
13mm Button fit. 5 pairs **NP042**

◀ **Slide-on Arm Cover Pads Plastic centre**

9mm Screw fit. 5 pairs. **NP043**



◀ **Super Slim - Symmetrical Plastic centre**

12mm Screw fit. 5 pairs. **NP044**  
12mm Push fit. 5 pairs. **NP045**

◀ **Super Slim - Oval Plastic centre**

13mm Screw fit. 5 pairs. **NP046**  
13mm Push fit. 5 pairs. **NP047**

◀ **Super Slim - Rectangle Plastic centre**

14mm Screw fit. 5 pairs. **NP048**  
14mm Push fit. 5 pairs. **NP049**

◀ **Silicone - Round Plastic centre**

9mm Screw fit. 5 pairs. **NP011**  
9mm Push fit. 5 pairs. **NP012**

◀ **Flexible PVC - Round Plastic centre**

9mm Screw fit. 5 pairs. **NP040**  
9mm Push fit. 5 pairs. **NP041**

◀ **Acetate Spade Screw fit only.**

15 x 8mm. **NP650** Gold.  
15 x 8mm. **NP651** Silver.

◀ **Titanium Nose Pads - Symmetrical - 12mm**

Screw fit. Silver. 1 pair. **NP020**  
Push fit. Silver. 1 pair. **NP021**

◀ **Titanium Nose Pads - Round - 9mm**

Screw fit. Silver. 1 pair. **NP022**  
Push fit. Silver. 1 pair. **NP023**

◀ **Titanium Nose Pads - Symmetrical - 12mm**

Screw fit. Gold. 1 pair. **NP024**  
Push fit. Gold. 1 pair. **NP025**

◀ **Titanium Nose Pads - Round - 9mm**

Screw fit. Gold. 1 pair. **NP026**  
Push fit. Gold. 1 pair. **NP027**

◀ **Allergy-free ceramic pads (D shape)**

16 x 8mm. **NP473**

◀ **Gimbal Nose Pads**

12 x 7mm. **NP352**  
15 x 8mm **NP353**  
17 x 8mm **NP354**





◀ **AirTec Cushion Pads in Silicone**  
Polycarb insert. 14.5mm Screw fit. 5 pairs. **NP60889**



◀ **AirTec Cushion Pads in Silicone**  
Polycarb insert 14.5mm Push fit. 5 pairs. **NP60961**



◀ **AirTec Cushion Pads in Silicone**  
All pure silicone, no insert 11mm Slide fit. 5 pairs. **NP61130**



◀ **PVC Saddle Flexibridge**  
Small Metal centre. 30mm Screw fit. Pack of 3. **SB01S**



◀ **PVC Saddle Flexibridge**  
Large Metal centre. 36mm Screw fit. Pack of 3. **SB02S**



◀ **Silicone Saddle Flexibridge**  
Small Plastic centre. 23mm Screw fit. Pack of 3. **SB03S**  
23mm Push fit. Pack of 3. **SB03P**



◀ **Silicone Saddle Flexibridge**  
Large Plastic centre. 30mm Screw fit. Pack of 3. **SB04S**  
30mm Push fit. Pack of 3. **SB04P**



◀ **Adjustable Silicon Bridge**  
Screw fit. Gold. Pack of 3. **AB01**



◀ **Replacement Saddle Bridge - Sports style**  
Metal insert, rubberised. Highly flexible.  
Screw fit, 6mm between holes.  
Pack of 3. **PB001**



◀ **Height Adjustable Nose Pads - Symmetrical**  
Screw fit. Plastic centre. Three pairs.  
15mm **NP050** 18mm **NP051**



◀ **Norville Sticky Silicone Pads**  
Gives the extra grip and comfort of silicone for plastic frames. Supplied in packs of three pairs. 20mm  
Ref: **NSSP**



◀ **Stick-on Foam pads**  
4 pairs  
Ref: **SO-FP**



◀ **Drill and push fit**  
Silicone bridge pads for plastic frame conversion. Two sizes: 12mm, 16mm.  
Ref: **FC-DP**



◀ **Screw on set**  
Plastic frame conversion to metal pad arms (screw on)  
Ref: **FC-MSC**



◀ **Stick on set**  
Plastic frame conversion to metal pad arms (stick on)  
Ref: **FC-MSO**



◀ **Heat Insert set**  
Plastic frame conversion to metal pad arms (heat insert)  
Ref: **FC-H**



▲ **Head width adjustment rings**  
Restore a firm head width fit. Simple - Quick - Effective. For worn, loose fitting frames, metal or acetate, use to restore a narrower head width. Ref: **HWA**



▲ **Slim Fit Temple Covers**  
An unobtrusive comfort accessory for use on metal sides. Supplied in packs of one pair. Ref: **SFTC**



▲ **Heat Shrink Tube**  
1.2m length pack per colour. Set of all colours. Clear Ref: **SS01**, Black Ref: **SS02**, White Ref: **SS03**, Red Ref: **SS04**, Yellow Ref: **SS05**, Blue Ref: **SS06**.



▲ **Grip Temple Sleeve**  
70mm length, 2mm core. Brown  
Pack of 10 pairs  
Ref: **MGRIP**

### Silicone Curl Ends



Adult:  
 Black - Ref: CE01  
 Brown - Ref: CE02  
 Beige - Ref: CE03  
 Red - Ref: CE04  
 Blue - Ref: CE05  
 Grey - Ref: CE06



Kids:  
 Black - Ref: CE07  
 Blue - Ref: CE08  
 Brown - Ref: CE09  
 Grey - Ref: CE10  
 Red - Ref: CE11

### Silicone Temple Tip

#### Replacement for acetate tips - non-slip silicone

#### Regular tip replacements - Plastic



CORE SIZE	COLOUR	LENGTH	REF	TIP SHAPE	
1.2mm	Crystal	65mm	AT1	Oval	5 pairs
1.2mm	Black	65mm	AT2		
1.2mm	Brown	65mm	AT3		

#### Ultra Thin



1.2mm	Black	65-70mm	UT1	Oval	3 pairs
1.2mm	Brown	65-70mm	UT2		
1.2mm	Clear	65-70mm	UT3		
1.2mm	Tortoise	65-70mm	UT4		

#### Non-slip Silicone

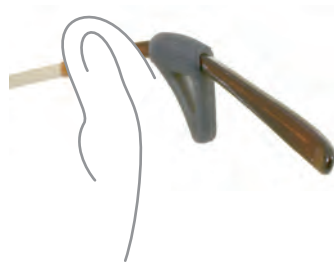


1.2mm	Crystal	65mm	ST1	Spade	5 pairs
1.2mm	Brown	65mm	ST2	Spade	
1.2mm	Black	70mm	ST3	Oval	

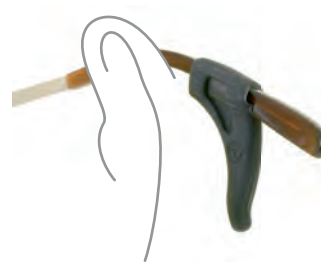
#### Temple Tip Extenders



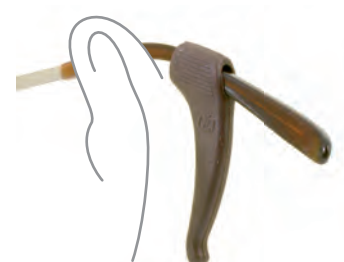
1.4mm	Black/Brown/Tortoise	65mm (=70mm)	19/301	Spade	7 pairs
1.4mm	Black/Brown/Tortoise	70mm (=75mm)	19/302	Spade	
1.4mm	Black/Brown/Tortoise	75mm (=80mm)	19/303	Spade	
1.4mm	Black/Brown/Tortoise	80mm (=85mm)	19/314	Spade	
1.6mm	Black/Brown/Tortoise	65mm (=70mm)	19/304	Spade	7 pairs
1.6mm	Black/Brown/Tortoise	70mm (=75mm)	19/305	Spade	
1.6mm	Black/Brown/Tortoise	75mm (=80mm)	19/306	Spade	
1.6mm	Black/Brown/Tortoise	80mm (=85mm)	19/315	Spade	
1.8mm	Black/Brown/Tortoise	65mm (=70mm)	19/307	Spade	7 pairs
1.8mm	Black/Brown/Tortoise	70mm (=75mm)	19/308	Spade	
1.8mm	Black/Brown/Tortoise	75mm (=80mm)	19/309	Spade	
1.8mm	Black/Brown/Tortoise	80mm (=85mm)	19/316	Spade	



▲ Ear Locks - Mini 17mm  
 Ref: Minilock  
 For children and imperceptible fittings.



▲ Ear Locks - Medium 26mm  
 Ref: Earlock  
 For everyday frame sizes.



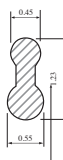
▲ Ear Locks - Large 35mm  
 Ref: Megalock  
 For industrial safety specs and sports eyewear.



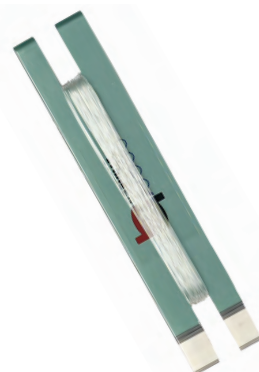
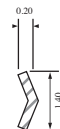
▲ **Clear Round Liner**  
Ref: WE/1235  
4 metres, 0.5mm dia



▲ **Clear Figure 8 Liner**  
Ref: WE/1242  
'Figure 8' liner. 4 metres



▲ **Regular 'V' Liner**  
Ref: WE/1250  
4 metres, 1.40 x 0.20mm



▲ **Supra cord**  
Ref: WE/223 - 10 metres  
Ref: WE/223B - 100 metre reel  
Diameter: 0.5mm.



▲ **Cyrex Invisible Washers**  
Ref: CYR - Pack of 5 coils.



▲ **Supra Mounting Tool**  
Ref: OU-110  
A simple hand tool to ease the fitting of edged grooved lenses into supra frames.



▲ **Supra Moulder**  
Ref: DI-102  
For an easy and fast introduction of cord (from 0.45 - 0.55mm)

## Plating Supplies



▲ **Promex Plating Machine Starter Kit**  
Ref: WE/67

The Pen Electroplating system allows the technician to carry out metal deposition on frame parts, accessories and small parts, easily and quickly. A must for finishing solder repairs or touching up worn plating. The electroplating solution is ready for use and is held in 10ml pens allowing coverage of a 60x60cm surface. Pens are not refillable. 220/240 volts. Weight 720g. The kit includes 3 pens: degreaser (WE/72), 18 colour gold (WE/75) & chrome colour (WE/73).



### Plating Pens

- Copper - Ref: WE/68
- Nickel - Ref: WE/69
- Black Nickel - Ref: WE/70
- Pink Gold - Ref: WE/71
- Absorbent (Degreaser) - Ref: WE/72
- Chrome - Ref: WE/73
- 18 colour Gold - Ref: WE/75
- Silver - Ref: WE/76
- Light Gold - Ref: AP-225

Also available:  
Leads for plating machine Ref: WE/67B



### ▲ Lacquer

Frame repair paints for repair and decoration of metal frames. Size: 12ml  
Ref: LA-226/A - Black, Ref: LA-266/AM - Matt Black  
Ref: LA-226/B - Dark Brown, Ref: LA-226/C - Light Brown  
Ref: LA-226/CR - Chrome, Ref: LA-226/O - Gold





### ▲ Ultra Clarity Wipes

Ref: Towelette

Individual wipes impregnated with Ultra Clarity solution. Carton of 48 packs, (21 wipes per pack).

### ▲ Ultra Clarity Care Pack

Ref: CCP

Care pack contains one 33ml spray, a microfibre cloth and a double ended screwdriver. Supplied as carton of 36 packs.

### ▲ Ultra Clarity Care Pack

Advanced formula offers improved cleaning to all lenses. 30ml bottle: box of 60 - Ref: UC/30 60ml bottle: box of 24 bottles - Ref: UC/60 180ml bottle: Single bottle - Ref: UC/180 180ml bottle: box of 5 bottles - Ref: UC/180/5 180ml bottle: box of 10 bottles - Ref: UC/180/10 180ml bottle: box of 24 bottles - Ref: UC/180/24



### ▲ Ultra Clarity Desk Top Display

Ref: UC/DTD

Acrylic rotating display stand.

• Free with orders for two or more boxes

### ▲ Solution 30 Lens Cleaner

Ref: WE/185A 25ml can, box of 20  
Ref: WE/185B 400ml can, box of 12

### ▲ Microfibre Cloths, Practice Size

Ref: MFC

40 x 40cm, Royal Blue.



### ▲ Air Duster Spray

Ref: PCP101

Air duster for removing dust and debris from electrical and electronic equipment including keyboards, printers and PCBs.

### ▲ Foam Cleaner Spray

Ref: PPC100

Foam cleaner to remove dirt, grease and grime from all hard surfaces. Suitable for use on VDUs, televisions, photocopiers and all types of office and IT equipment. It can also be used as a stain remover for carpets and other soft furnishings.

### ▲ Selvyt Cloths

Ref: SCA 25 x 25cm, Ref: SCB 35 x 35cm  
Ref: SC/C 43 x 35cm, Ref: SC/D 53 x 43cm  
Ref: SC/E 61 x 53cm



▲ **Loctite Adhesives**

**Ref: Loctite 222** 10ml  
Holds screws securely from working loose while still allowing removal by screwdriver.

**Ref: Loctite 243** 10ml  
A grade higher than 222 for slightly stronger screw retention.

**Ref: Loctite 401** 3g  
For bonding lenses into Polymil frames.

**Ref: Loctite 406**  
For bonding lenses into Polymil frames.

**Ref: Loctite 454** 20g  
For bonding Polymil rubbers onto frames.



▲ **Needle Variety Kit**

**Ref: 398116**  
28 assorted needles. Dispensing tips are colour coded to indicate the inner diameter of the needle. They can be attached to most LOCTITE adhesive bottles and syringes to improve control.



▲ **Hypo-tube cement**

**Ref: WE/232**  
Liquid lens liner. 10ml tube.



▲ **Loctite 290**  
**Ref: Loctite 290**  
Recommended for locking pre-assembled fasteners, e.g. instrument screws, electrical connectors, etc. 10ml bottle.



▲ **Loctite 460**  
**Ref: Loctite 460**  
Instant superglue. Will not damage acetate or plastic lenses. 20g bottle.



▲ **Loctite 480**  
**Ref: Loctite 480**  
Black Instant superglue. Will not damage acetate or plastic lenses. 20g bottle.



▲ **Loctite 3491**  
**Ref: Loctite 3491**  
Light cure adhesive. 25ml bottle.



▲ **Loctite Glue Remover**  
**Ref: Glue Remover**  
Removes super glue and many other glues from badly bonded objects and accidentally bonded fingers. 5g tube.



▲ **WD40 Lubricating/Easing Oil**  
**Ref: G/Stock/1**  
Highly penetrating action allows rapid release of seized or corroded parts. Leaves a lubricating film which aids re-assembly and prevents further corrosion. 450ml can.



▲ **Screw Loosening Fluid**  
**Ref: SLF**  
Penetrating and lubricating fluid in handy syringe. 6cc.



▲ **Pin Point Oiler**  
**Ref: PPO**  
Pin point, one drop at a time oiler. Great for spring or standard hinges.



▲ **Butane Gas Refill**

Ref: WE/95

Butane gas to refill soldering irons, lighters, igniters and glue guns and other portable gas powered appliances.



▲ **Miniflam Soldering Spares Oxygen canister:**

Ref: WE/96

**Gas canister:**

Ref: WE/98



▲ **Replacement Needles**

(sold as pairs)

0.6mm Ref: WE/207,

0.8mm Ref: WE/208,

1.0mm Ref: WE/209,

1.2mm Ref: WE/210



▲ **Gas Torch**

Ref: WE/225

Instant ignition. Two hours burn time. Safety catch. 13000C flame. Refillable. Pallarium Solder: White Ref: WE/92 Nickel, chrome or silver Gold Ref: WE/93 (gold colour frames only).



▲ **Push-on pad Removal Tweezer**

Ref: PRT

For the easy removal of push-on pads.



▲ **Self-closing Fine Tip Tweezer**

Ref: SCFTT

Delicate point and sturdy stainless steel spring action holds the smallest screws securely. 16cm long



▲ **Duratool Needle File Set**

Ref: 1375936

Supplied in a fitted vinyl wallet, set consists of 12 Swiss pattern needle files: Round, Square, Triangle, Half Round, Flat/warding, Knife, Hand, Oval, Barrette, Round Edge, Slitting and Pippin.



▲ **Flat File Ref: FF 10cm**

▲ **Half Round File**

Ref: HRF 10cm

For finishing, shaping and deburring



▲ **Pin Tong**

Ref: PT4

Holds small drills, burrs, wires and miniature tools. Capacity: 0-1/8" (3.2mm). Rotating head, 2 Double end collets, Nickel plated body. 9.5cm long.



▲ **Mini Screw Extractor (wide jaw) Ref: ORB-OT-1806**

Broken screw extractor



▲ **Mini Screw Extractor (narrow jaw) Ref: ORB-OT-1807**

Broken screw extractor



▲ **Screw Trimmer & Miller**

Ref: T50

Cuts excess off screw ends and when finished with the hand miller provided leaves a smooth result. An essential tool for rimless glazing.













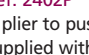

▲ Eyewire Punch ▲ Driver Slot

▲ SHOOTOUT Frame Repair Multi-tool Kit

Ref: 2042

The tool that saves you time: punches out hinge and eyewire screws, replaces the hinge screw with a QuickFix rivet, re-establishes a driver slot in a damaged screw head or peens the screw end to prevent loose and lost screws. The Shootout arms you with the most power available in a hand tool. The patented lever mechanism takes a gentle squeeze transforming it into controlled pressure to reduce damage to the barrel when ejecting broken screws.

SHOOTOUT Replacement Components:

-  Ref: 2042A Anvil 2.7mm Hollow
-  Ref: 2042AN Anvil Narrow, 2.0mm Hollow
-  Ref: 2042AS Solid Anvil
-  Ref: 2042AW Anvil Wide, 3.0mm Hollow
-  Ref: 2042EA Short Anvil for Eyewire Punch
-  Ref: 2042EP Eyewire Screw Ejector
-  Ref: 2042P Hinge Screw Ejector
-  Ref: 2042PC Cupped Point
-  Ref: 2042PF Flaring Point
-  Ref: 2042PS Slotting Point

◀ Shootout Screw Ejector

Ref: 2402P

A plier to push out broken and threaded screws. Supplied with two different points and four anvils.



◀ QuickFix Frame Rivets

Using the Shootout you can now rivet frame temples needing repair. Available in packs of 100

2042QFS QuickFix rivet 'silver', 2042QFG QuickFix rivet 'gold', 2042QFGM QuickFix rivet 'gunmetal'



◀ Spring Hinge Plier Kit

Ref: GP2018

At last here is an effective tool for assembling spring hinge frames!

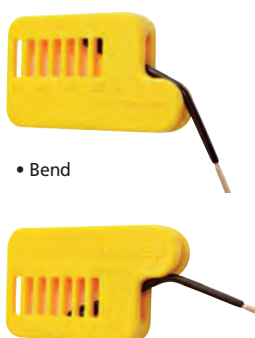
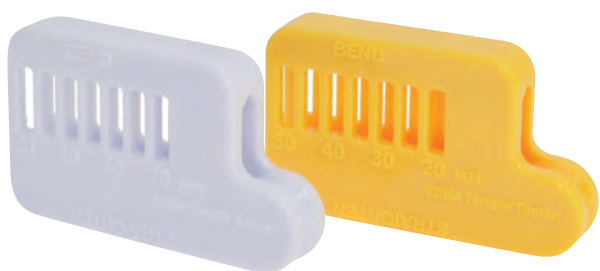
This easy to use tool set allows you to extend the spring hinge barrel and grab it gently but securely. By extending the barrel you can align the temple with the front and easily insert the hinge screw. With a little practice you can single-handedly assemble those frustrating spring hinge frames in seconds.



◀ Replacement lever plate

Ref: 2018L

Replacement plate for the spring hinge plier kit.



• Bend

• Straighten

◀ The Temple Tamer

Ref: 2084/2

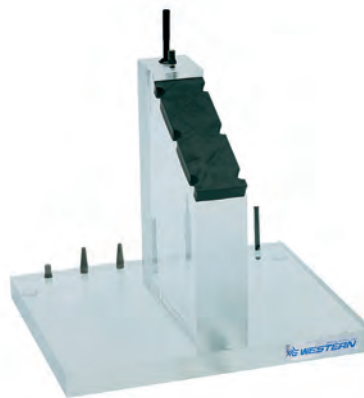
Be kind to your fingers when adjusting an ear piece or changing temple tips by letting the Temple Tamer take the heat and do the work. Also great for replacing temple tips as the Temple Tamer makes it easy to straighten an ear piece, replace the temple tip and curve it back into position. Pack of two, one yellow and one white.



### ▲ Eyewire Curving Press

Ref: 7080

The ideal way to perfectly mate the curve of the eyewire to the base curve of the lens bevel. The ECP presses the curves simultaneously in the same place on the top and bottom of the eyewire. Place the eyewire between the matching 6 or 9 base curved blocks and screw closed. Tighten less for other variations in base curves. The ECP is also used to narrow the bridge for a better fit and to reduce the frame DBL. Size: 76mm x 190.5mm x 82.5mm.



### ▲ Bench Anvil Kit

Ref: 2101

Provides an angled, comfortable surface on which to place a frame when inserting eyewire, hinge screws or making general repairs. Stop hunching over a rubber bench block and begin working comfortably from your tabletop. The 'third hand' feature of the Bench Anvil includes three nut wrenches, one Phillips/flat screwdriver blade, riveting and cupping points, and solid anvil. 152.5mm x 127mm x 127mm.



### ▲ Rubber Guard Bench Block

Ref: 2100

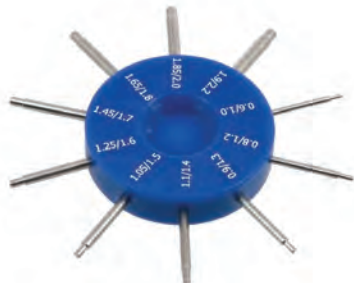
Rubber guard protects eyewear and counter tops from damage while making frame adjustments. Screws provided for mounting. 76mm long.



### ▲ Optical Thumb Tool

Ref: OTT 006

The perfect tool for bending temples, eyewires and endpieces. Use the large radius over your thumb or index finger for total control of your adjustments. Use the smaller radius for tighter bends or thinner, more flexible frames.



### ▲ Rimless Hole Gauge

Ref: WE/261

Gauge for quick and accurate measuring of the holes for rimless glazing. Features 20 diameters from 0.6 mm up to 2.2 mm. Accuracy of 0.01 mm. Precision tool with 10 stainless steel gauge pins. An absolute must for every workshop processing rimless.



### ▲ File Guard

Ref: LI-320

Protects frame when filing.



▲ **Magnetic Tool Rack**

Ref: MTR

Screws to a wall or the back of a work bench for quick, easy tool storage. 50cm long (tools not included).



▲ **Acrylic Tool Rack**

Ref: 2176

Get organised with our functional and attractive counter top rack. Holds pliers, drivers, files, rules, lens clock and eight vials of screws, blades, etc. Clear acrylic. 28cm w x 15cm h x 15cm d. (tools not included).



▲ **Tool Stand - Round**

Ref: CT6208

Round plastic tool stand to hold pliers, screwdrivers, etc. (tools not included)



▲ **Tool Stand - Curved**

Ref: CT6211

Curved plastic tool stand to hold pliers, screwdrivers, etc. (tools not included)



▲ **Plier Rack**

Ref: TS3

Made of acrylic with aluminium cross members. (tools not included)



▲ **Wood Tool Rack**

Ref: TS5

Rack for pliers and varied tools. Varnished wood. Width 210mm. (tools not included)



▲ **Metal Tool Rack**

Ref: TS6

Neat and simple stand in stainless steel, (tools not included)





▲ **Swarf Removal Tool** Ref: 2088

Unique tool for removing the residue resulting from edging polycarb and Trivex lenses. Curved edges help keep the scrapping blade balanced on the edge of the lens. Fine, squared tips for cleaning out the groove of a nylon cord rimless.



▲ **Lens Harpoon** Ref: 2086

Use when deburring, smoothing or tapering a hole in rimless mounted lenses to prevent chipping. Diamond-tipped conical point mounted in a carbon steel nickel plated handle.



▲ **Screw Finishing Tool** Ref: 2087

Rounds off the ends of cut screws and cut temples. Made of hardened carbide steel permanently mounted in a carbon steel nickel-plated handle. Maximum diameter 1.6mm.



▲ **Rimless Tube Refresher** Ref: 2085

A handy tool for reopening the compression rimless tube to make inserting the post easier.



▲ **Universal Nut Grabber (Guild)** Ref: 5070

This is the driver you can't live without! As the size and shape of locknuts proliferates, so does your collection of nut drivers. The expandable jaw of this driver grips any size or shape nut. Finished in solid, all-metal construction (length 102mm).



▲ **Universal Nut Grabber (Regular)** Ref: 5075

The expandable jaw of this driver grips any size or shape nut.

Injection moulded plastic (length 107mm).



▲ **Multi** Ref: SM6

Three different sized standard blades and one cross head blade. (Spare blades are available as a complete set of four Ref: TU130/B4 Price: £4.00)



▲ **The Stealth** Ref: STEALTH

The most comfortable screwdriver ever! High power magnet holds the replaceable blade. Head swivels to eliminate wrist fatigue. (Spare blade Ref: 2090)



▲ **4x4 Driver** Ref: 5060

Delivers tremendous torque and stores its own supply of blades in the handle. Easy to grip heavy-duty body with removable ball-bearing cap. Four blades included: flat/flat (2), Phillips, and fine tip. 127mm long.



▲ **Prestige** Ref: SP8

Heavyweight with ball bearing palm grip. One extra blade in handle for larger screw heads. (Blades available in 1.5 Ref: TU875/15 or 2.0mm Ref: TU875/20)



▲ **EZ Grip Driver**

Mix 'n' Match - your choice of coloured handle with your choice of blade. Set of six Ref: 2360. Screwdriver - blades: Flat/Flat, Phillips x2, Phillips/Flat, Nutdriver - Hex Wrench, Star Nut Small, Star Nut Large Handle colour - black Ref: 2361, blue Ref: 2362, Green Ref: 2363, red Ref: 2364, white Ref: 2365, yellow Ref: 2366.



#### ▲ TruBlue Aluminium Screwdriver

Indestructible and comfortable. The industry's standard driver with a new attractive blue protective finish. Rotating cap has flat spot to prevent the driver from rolling. The blade is held in place by a steel snap ring. 108 mm long.

TruBlue Standard Screwdriver Ref: 2300  
 TruBlue Fine Flat Tip Screwdriver Ref: 2300FT  
 TruBlue Standard Hex Nut Driver Ref: 2300H  
 TruBlue Phillips Screwdriver Ref: 2300P  
 TruBlue Phillips/Flat Screwdriver Ref: 2300PF  
 TruBlue Screw Extractor Ref: 2300SE  
 TruBlue Star Nut Large Driver Ref: 2300SNL  
 TruBlue Star Nut Small Driver Ref: 2300SNS  
 TruBlue Handle Only Ref: 2305  
 TruBlue Driver Set (All 8 drivers listed) Ref: 2301



#### ▲ Ball Power Driver Ref: 5050

Stationary cap rotates on ball bearings yielding a smooth comfortable feel. A high power magnet holds the blade securely in place. 113mm long.



#### ▲ SU-8 Pick Up Screwdriver

Ref: TO-747

Prehensile clamping jaws hold 2mm flat blade.



#### ▲ Driveshaft Reversible

Comfortable and attractive. Made of non-wearing nylon with a rotating cap. 108mm long. Reversible blade.

Driveshaft Standard Screwdriver Ref: 2048  
 Driveshaft Fine Flat Tip Screwdriver Ref: 2046FT  
 Driveshaft Standard Hex Nut Driver Ref: 2046H  
 Driveshaft Phillips Screwdriver Ref: 2046P  
 Driveshaft Phillips/Flat Screwdriver Ref: 2046PF  
 Driveshaft Screw Extractor Ref: 2046SE  
 Driveshaft Star Nut Large Driver Ref: 2046SNL  
 Driveshaft Star Nut Small Driver Ref: 2046SNS  
 Driveshaft Handle Only Ref: 2049  
 Driveshaft Set (All 8 drivers listed) Ref: 2046  
 Driveshaft Steel Snap Ring Ref: 2049R



#### ▲ Wooden Handle Screwdriver Ref: TO-114

Large wooden handle. Comes with two detachable blades.



#### ▲ Get-A-Grip Driver Cushions Set

Ref: 2047

Get a firmer and more comfortable grip on your driver while relieving stress on your fingers. Multiple colours for fast tool identification (set of five). 39mm length, 7mm centre diameter.



#### ▲ Pocket Clip Reversible

This useful design allows you to keep track of your driver by comfortably carrying it with you. Injection moulded of super sturdy non-wearing nylon with rotating cap. The removable hardened German steel blade is securely held in place by a steel snap ring. 108 mm long.

Pocket Clip Driveshaft Standard Screwdriver Ref: 2058  
 Pocket Clip Driveshaft Fine Flat Tip Screwdriver Ref: 2059FT  
 Pocket Clip Driveshaft Standard Hex Nut Driver Ref: 2059H  
 Pocket Clip Driveshaft Phillips Screwdriver Ref: 2059P  
 Pocket Clip Driveshaft Phillips/Flat Screwdriver Ref: 2059PF  
 Pocket Clip Driveshaft Screw Extractor Ref: 2059SE  
 Pocket Clip Driveshaft Star Nut Large Driver Ref: 2059SNL  
 Pocket Clip Driveshaft Star Nut Small Driver Ref: 2059SNS  
 Pocket Clip Driveshaft Handle Only Ref: 2057  
 Pocket Clip Driveshaft Set (All 8 drivers listed) Ref: 2059



#### ▲ Replacement Driver Blades

Made of specially formulated steel using a special hardening process to minimise chipping and bending.

Standard/Narrow Driver Blade 1.6mm x 2.2mm Ref: 2090

Fine Flat Tip Blade 1mm x 1mm Ref: 2091

Phillips Small/Medium Blade Ref: 2092

Fine Phillips/Flat Blade 2.2mm x 2.5mm Ref: 2095

Standard Hex Nut 2.3mm Wrench Tip Ref: 2094

Screw Extractor Small/Medium Blade 1.1mm x 1.5mm Ref: 2093

Star Nut Small 2.2mm Wrench Tip Ref: 2096

Star Nut Large 2.8mm Wrench Tip Ref: 2097



### ▲ Frame Adjustment Tool Kit

Ref: FATK

A useful kit in a carry case, with the following items in a foam insert:  
 Pad adjustment plier Ref: PP103, Hard wire side cutter Ref: PP104  
 Inclination fine jaw plier Ref: PP131, Curved holding slotted plier Ref: PP132  
 Holding nylon plier Ref: PP161, Multiple blade screwdriver Ref: SM6



### ▲ Deluxe Screwdriver Set

Ref: CT31359A

Set contains 9 screwdrivers and locknut drivers: Flat head x 2 (1.6, 1.8),  
 Cross head x 2 (1.5, 1.8), Locknut drivers x 5 (2.02, 2.32, 2.52, 2.57, 2.82).  
 Supplied in display box.



### ▲ Screw Ring Set

Ref: BA-200

Set of 5 finger-worn screwing rings, to block one side of the screw/  
 nut being worked on (hexagonal, flat and crosshead).



### ▲ Screwdriver, Nut Wrench and Screw Ring Set

Ref: TO-220

Set contains 5 handles and 9 drivers: Flat head x 2 (1.5, 1.7), Cross head x 2  
 (1.5, 1.7), Star wrench x2 (2.5, 2.8), Hexagonal wrench x2 (2.0, 2.0), Square  
 wrench x1 (2.2). Also 5 finger-worn screwing rings, to block one side of  
 the screw/nut being worked on (hexagonal, flat and crosshead). Supplied  
 in wooden display box.



### ▲ Screwdriver/Locknut Driver Set

Ref: CT31304

Set contains three slot screwdrivers 1.5, 1.7  
 and 2.00, three cross point, 000, 00 and 0, four  
 locknut drivers, 2.0, 2.3, 2.5, and a handle for the  
 drivers. All in a plastic case which has an in-built  
 storage area for screws.



### ▲ Tool Kit - Small

Ref: CT31101-2

A hard case with carrying handles which contains  
 seven pliers, two locknut drivers, one slot  
 screwdriver, one cross screwdriver, reamer, and a  
 supra mounting tool. Size: 290mm x 210mm.



### ▲ Tool Kit - Large

Ref: CT31102-2

A hard case with carrying handles which  
 contains eight pliers, two locknut drivers, one  
 slot screwdriver, one cross screwdriver, small flat  
 file, reamer, supra mounting tool and a screw  
 trimmer. Size: 360mm x 260mm.





#### ▲ Combo Chain Nose Round/Delrin Plier

Ref: 1012V Guild

A 'must have' plier that is a dispensing favourite! Use it to adjust the angle of the end piece without marring the frame. The 8mm wide exclusive dovetail Delrin pad protects the frame surface. The round metal jaw tapers to a fine point to fit into tight spaces.



#### ▲ Combo Chain Nose Flat/Delrin Plier

Ref: 1013V Guild

The classic combo! Use it to adjust the angle of the end piece without marring the frame. The 8mm wide dovetail Delrin pad protects the frame surface. The flat metal jaw tapers to a fine point to fit into tight areas. With a hand-conforming pistol grip handle with spring open action.



#### ▲ Long Nose Chain Plier

Ref: 1040V Guild

Flat and smooth inside, rounded outside, these jaws are tapered to a fine point for shaping and bracing. Adjusts bridges, pad arms and temples, or simply makes picking up a screw easy.



#### ▲ Wide Jaw Angling Plier

Ref: 1009V Guild

Best bet for adjusting pantoscopic tilt and temple angles on all types of frames. Opens extra-wide to accommodate large temples and hinges. The recessed hole in each jaw protects the hinge screw.



#### ▲ Finger Piece Plier

Ref: 1045V Guild

Securely grip the hinge or end piece on a metal frame to modify the temple angle for proper pantoscopic tilt. Lock onto metal temples with the opposing grooves in the jaws to make adjustments. Also used to grip the front of a plastic frame that has a shield. Recessed holes in the jaws protect the hinge screw.



#### ▲ Wire Bracing Plier

Ref: 1008V Guild

Non-marring jaws are grooved for a tight grip while bracing and adjusting round wire frame components and round metal temples. Great for bracing rimless while making adjustments and adjusting some pad arm styles. The Guild style features two groove diameters: 1mm and 2mm.



**▲ Double Delrin Jaw Plier**

Ref: 1015V Guild

Use to grip plastic or metal frames when bending temples or altering the eyewire. Superior Delrin pads are only 8mm wide, allowing you to get into restricted spaces. The pads are dovetailed so replacing them is quick and easy.



**▲ Screw and Nut Rimless Bracing Plier**

Ref: 1016V Guild

Fearlessly adjust a screw and nut rimless mounting without cracking the lens! Our exclusive dovetail Delrin padded jaw has a channel that holds the screw head without scratching the lens. The slotted metal jaw securely grips the glass screw at the retaining nut. With the mounting held firmly you can safely adjust the end piece, the temple, or the bridge.



**▲ Rimless Compressing/Bracing Plier**

Ref: 1050V Guild

The master plier for assembling, tightening and bracing the screwless, rimless compression frames. Opposing Delrin jaws are dual grooved to cradle the metal and plastic components on both the horizontal and vertical axis, minimizing the risk of slipping and scratching the lens. One jaw pivots to compensate for base curve so the post and tubing compress in unison. Opens extra wide for thick lenses.



**▲ Eyewire Forming Plier**

Ref: 1010V Guild

Delrin pads gently but firmly shape the metal eyewire to conform to the base curve of the lens. Safe to use on polyamide or lightly warmed plastic frames. Exclusive screw-free dovetail pads eliminate the bother of replacing screw-on type pads and the possibility of the screw marring the frame.



**▲ Narrow Eyewire and Bridge Forming Plier**

Ref: 1011V Guild

The classic six base eyewire forming pad has been reconfigured to a narrow 15mm width for smaller frames. The diminutive Delrin jaw can be used to adjust the eyewire curve, alter the bridge size or adjust temple tips.



**▲ Screw Flaring Plier**

Ref: 1044V Guild

A quick and easy way to flare the end of a hinge screw to keep it from coming out of the hinge. A sturdy, sharp point flares the end of the screw while the hole on the opposite jaw protects the screw head. Prevents lost screws and eliminates patient and dispenser inconvenience.



#### ▲ Side Cutting Plier

Ref: 1026V

The narrow 15mm cutting edge and side cutting action gives easy access to hard to reach screws.



#### ▲ Narrow Flush End Cutting Plier

Ref: 1027V Guild

Cutting the excess length from rimless compression tubing is easy and safe with the 5mm wide head. Rounded jaws prevent scratching the lens.



#### ▲ Sizing and Screw Inserting Plier

Ref: 5106F Guild (old ref: 1006V)

While holding the eyewire closed, you can easily insert and tighten the eyewire screw. This time saving plier reduces the possibility of damage to lenses or frames by keeping the screwdriver from slipping off the eyewire screw head.



#### ▲ Round/Flat Nose Plier

Ref: 1014V Guild

Known also as a 'half round' or 'looping plier', this tool has many applications. The most popular use is for adjusting 'American' pad arm curvature and nose pad height.



#### ▲ Nose Pad Adjusting Plier

Ref: 1030V Guild

The secure way to safely and easily adjust all types of nose pads. The cupped jaw for cradling the pad is matched to a slotted jaw for securely bracing the nose pad box and arm. Makes repositioning the nose pad easy.





Parallel Jaw pliers for unparalleled function. Entirely new configuration for 21st century eyewear designs. Jaws that close parallel are perfect for use on thick materials, grip more securely, and resist marring eyewear.

Parallel action jaws excel when making adjustments to the temple, barrel and front piece on any eyewear style or frame material, (conventional pliers with scissor-closing action could pinch thicker materials and mark the frame).

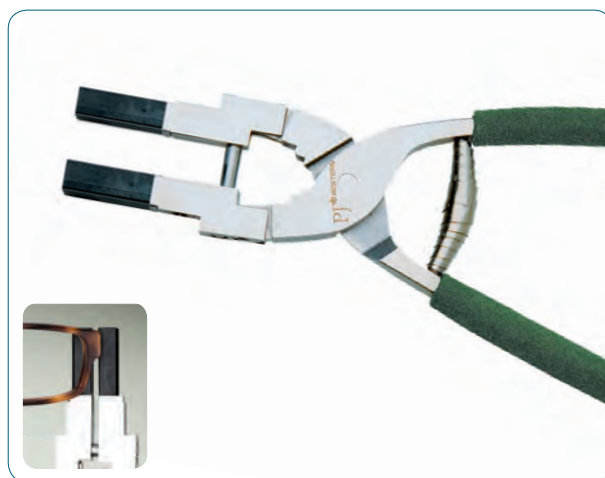
PJ Line pliers feature long, comfortable, foam-covered grips and narrow 8mm wide jaws that fit neatly in tight areas.



**▲ PJ Temple Angling Plier**

Ref: 5112PJ

A 'must have' plier that is a dispensing favourite! Use it to adjust the angle of the end piece without marring the frame. The 8mm wide exclusive dovetail Delrin pad protects the frame surface. The round metal jaw tapers to a fine point to fit into tight spaces.



**▲ PJ Double Delrin Jaw Plier**

Ref: 5115PJ

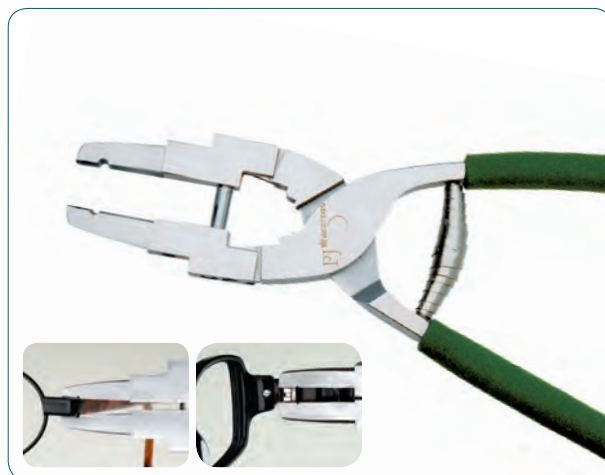
Use to grip plastic or metal frames when bending temples or altering the eyewire. Superior Delrin pads are only 8mm wide, allowing you to get into restricted spaces. The pads are dovetailed so replacing them is quick and easy.



Parallel closing jaws grip frame securely



Non-parallel jaws can damage thick frames



**▲ PJ Pantoscopic Tilt Fingerpiece Plier**

Ref: 5145PJ

Securely grip the hinge or end piece on a metal frame to modify the temple angle for proper pantoscopic tilt. Lock onto metal temples with the opposing grooves in the jaws to make adjustments. Also used to grip the front of a plastic frame that has a shield. Recessed holes in the jaws protect the hinge screw.



▲ **Double Nylon Jaw Plier**

Ref: DNJ/082

Nylon parallel jawed plier



▲ **LG Flat Nose Plier**

Ref: LGFN/081

Narrow parallel jawed plier



▲ **Parallel Jaw Flat Plier**

Ref: PJF/091

Nylon and narrow parallel jawed plier



▲ **Parallel Jaw Round Plier**

Ref: PJR/092

Narrow rounded parallel jawed plier



▲ **Pad Arm Curving Plier**

Ref: 2016V

Put the curve back into bent pad arms in one squeeze. The top jaw is concave and the opposing jaw is tapered to fit inside. Pressing the pad arm between the pre-formed jaws quickly creates the traditional pad arm curve.



▲ **Nose Pad Adjusting Plier**

Ref: 2030V

The secure way to safely and easily adjust all types of nose pads. The cupped jaw for cradling the pad is matched to a slotted jaw for securely bracing the nose pad box and arm. Makes repositioning the nose pad easy.



▲ **Combo Pad Arm/Nose Pad Adjusting Plier**

Ref: 2035V

Nose pad & pad arm adjusting tool all in a single plier. Specially designed jaws safely grab and adjust the nose pad and box. The unique jaw tips pinch the interior and the exterior of the pad arm to adjust its curvature.



▲ **Bridge Reducing Plier**

Ref: 2037F

Three jaws engage the bridge from above and below for extreme bridge reduction. Create a more comfortable fit and to reduce the PD. Useful for bending the eyewire to alter the base curve. For metal and plastic frames



▲ **Temple Bending Plier**

Ref: 2004F

A range of stepped Delrin plastic arcs aid you in easily curving end pieces on temples. Obtain the most comfortable and individualised bend for your patient.



▲ **Wire Bracing Plier**

Ref: 2008V

Non-marring jaws are grooved for a tight grip while bracing and adjusting round wire frame components and round metal temples. Great for bracing rimless while making adjustments and adjusting some pad arm styles.



▲ **Wide Jaw Angling Plier**

Ref: 2009V

Best bet for adjusting pantoscopic tilt and temple angles on all types of frames. Opens extra-wide to accommodate large temples and hinges. The recessed hole in each jaw protects the hinge screw.



▲ **Combo Round Chain Nose/Delrin Plier**

Ref: 2012V

Use it to adjust the angle of the end piece without marring the frame. The 8mm wide exclusive dovetail Delrin pad protects the frame surface. The round metal jaw tapers to a fine point to fit into tight spaces.



▲ **Combo Flat Chain Nose/Delrin Plier**

Ref: 2013V

Use to adjust the angle of the end piece without marring the frame. The 8mm wide dovetail Delrin pad protects the frame surface. The flat metal jaw tapers to a fine point to fit into tight areas. Traditional symmetrical handle with spring open action.



▲ **Round/Flat Nose Plier**

Ref: 2014V

Known also as a 'half round' or 'looping plier', this tool has many applications. The most popular use is for adjusting 'American' pad arm curvature and nose pad height.



▲ **Double Delrin Jaw Plier**

Ref: 2015V

Use to grip plastic or metal frames when bending temples or altering the eyewire. Superior Delrin pads are only 8mm wide, allowing you to get into restricted spaces. The pads are dovetailed so replacing them is quick & easy.



▲ **Tri-Angling Plier**

Ref: 2019V

Having trouble adjusting nylon cord rimless? The Tri-Angling Plier is the perfect tool for adjusting the temples without putting pressure on the endpiece. Use cellophane tape to protect the frame surface and then safely adjust without stressing the nylon cord or lens. An excellent tool for adjusting delicate corners or reshaping a clip-on to conform to the frame.





#### ▲ Barrel Aligning Plier

Ref: 2033V

Quickly straighten bent barrels and correct the spacing so barrels align properly.



#### ▲ Curved Tip Nose Chain Plier

Ref: 2039V

A classic general-purpose plier with curved jaws that taper to a fine point. Ideal for gripping in hard to reach areas.



#### ▲ Long Nose Chain Plier

Ref: 2040V

Flat and smooth inside, rounded outside, these jaws are tapered to a fine point for shaping and bracing. Adjusts bridges, pad arms and temples, or simply makes picking up a screw easy.



#### ▲ Finger Piece Plier

Ref: 2045V

Securely grip the hinge or end piece on a metal frame to modify the temple angle for proper pantoscopic tilt. Lock onto metal temples with the opposing grooves in the jaws to make adjustments. Also used to grip the front of a plastic frame that has a shield. Recessed holes in the jaws protect the hinge screw.



#### ▲ Eyewire Closing Plier

Ref: 2007V

Also known as a 'sizing plier', this tool allows you to confirm proper lens size and shape by closing the eyewire without inserting the screw. Pointed jaws will not damage the eyewire screw barrel. Features replaceable points.



#### ▲ Eyewire Forming Plier

Ref: 2010V

Delrin pads gently but firmly shape the metal eyewire to conform to the base curve of the lens. Safe to use on polyamide or lightly warmed plastic frames. Screw-free dovetail pads eliminate the bother of replacing screw-on type pads and the possibility of the screw marring the frame.



#### ▲ Spring Hinge Plier Kit

Ref: 2018S PREMIUM

This simple to use tool set allows you to extend the spring hinge barrel to hold it in the open position. The self-locking plier makes it easy to align the temple with the frame front and insert the hinge screw. Single handedly assemble those frustrating spring hinge frames in seconds. Use the Universal Nut and Screw Grabber (5070 and 5075) to easily insert the hinge screw.



#### ▲ Lens Turning Plier 20mm or 25mm

20mm Ref: 2028V, 25mm Ref: 2029V

The traditional axis aligning plier with 25mm, or 20mm round pads (for smaller eyesizes), feature matching +4.00D base curves to reduce stress on the centre of high minus, thin centre lenses. The pads encapsulate the metal mounting bracket and their movement is restricted so there is no opportunity to accidentally scratch lenses. Lenses up to 90mm diameter.



▲ **Lens Splitting Plier**  
 Ref: 5027F  
 Removes display lenses from supra frames in a snap



▲ **Deblocking Plier**  
 For Block Hubs 15.75mm x 12mm Ref: 2001V, 12mm round Ref: 2002V, 15.5mm x 14.25mm Ref: 2003V



▲ **Deblocking Plier 15mm round**  
 Ref: 2005V  
 for Block Hub 15mm round



▲ **Deblocking Plier 15mm round with Metal Cap**  
 Ref: 2006V  
 for Block Hub 15mm round with Metal Cap



▲ **Oblique Head End Cutting Plier**  
 Ref: 2024F  
 This heavy-duty cutting plier has a 24mm long cutting edge. The head tapers to a fine point to cut screws flush in restricted areas. Use only on soft metals and plastics.



▲ **Side Cutting Plier**  
 Ref: 2026V  
 The narrow 15mm cutting edge and side cutting action gives easy access to hard to reach screws. Use only on soft metals and plastics.



▲ **Concorde Tungsten Carbide End Cutting Plier**  
 Ref: 5024F  
 These 'top of the line' cutters combine tungsten carbide steel cutting tips with military grade superior tensile-strength stainless steel. Comfortable foam-covered extra leverage handles provide precise control for nearly flush cuts. 13mm wide cutting edge and 6-1/2" long.



▲ **Concorde Tungsten Carbide Side Cutting Plier**  
 Ref: 5026F  
 These 'top of the line' cutters combine tungsten carbide steel cutting tips with military grade superior tensile-strength stainless steel. Comfortable foam covered extra leverage handles provide precise control for nearly flush cuts. 13mm wide cutting edge and 6-1/2" long.



▲ **Oblique Head End Cutting Plier for Hard Metals**

Ref: 2025V

Slices through stainless steel and other hard metals. The 22mm cutting edge is angled and tapered to a fine point for close cuts without damaging the frame. Made of tempered carbon stainless steel.



▲ **Rimless Post Pulling Plier**

Ref: 2020V

Safely disengages the bridge and temple from compression rimless lenses. Prevents lens breakage that results from the attempt to extract the post and tubing by hand.



▲ **Screwless Rimless Compressing Plier - Laboratory Use**

Ref: 2034V

Constructed to withstand the extra pressure of the initial assembling of compression rimless frames. Stationary Delrin jaws are dual grooved to cradle the metal and plastic components on both the horizontal and vertical axis, minimising the risk of scratching the lens. Finger bracing handle is designed for squeezing without slipping.



▲ **Rimless Tube Stripper Plier**

Ref: 3027V

Effortlessly remove compressed tubing from compression posts on rimless frames. Cutting blade gap is adjustable so you cut through the tube without biting into the metal post. Slot in jaw aids in removing cut tube from post.



▲ **Combo Round Chain Nose/Delrin Plier Micro Range**

Ref: 8012S

A 'must have' plier that is a dispensing favourite! Use it to adjust the angle of the end piece without marring the frame. The 8mm wide exclusive dovetail Delrin pad protects the frame surface. The round metal jaw tapers to a fine point to fit into tight spaces.



▲ **Double Delrin Jaw Plier Micro Range**

Ref: 8015S

Use to grip plastic or metal frames when bending temples or altering the eyewire. Superior Delrin pads are only 8mm wide, allowing you to get into restricted spaces. The pads are dovetailed so replacing them is quick and easy.



▲ **Nose Pad Adjusting Plier Micro Range**

Ref: 8030S

The secure way to safely and easily adjust all types of nose pads. The cupped jaw for cradling the pad is matched to a slotted jaw for securely bracing the nose pad box and arm. Makes repositioning the nose pad easy.



▲ **Nose Pad Inserting Plier**

Ref: 8031S

The secure way to safely and easily adjust all types of nose pads. The cupped jaw for cradling the pad is matched to a slotted jaw for securely bracing the nose pad box and arm. Makes repositioning the nose pad easy.





▲ **Nose Pad Popping Plier**

Ref: 8032S

Quickest, easiest and cleanest way to remove old push-in nose pads from the pad box without putting pressure on or distorting the pad arm, or breaking your nails!



▲ **Long Nose Chain Plier Micro Range**

Ref: 8040S

Flat and smooth inside, rounded outside, these jaws are tapered to a fine point for shaping and bracing. Adjusts bridges, pad arms and temples, or simply makes picking up a screw easy.



▲ **Finger Piece Plier Micro Range**

Ref: 8045

Securely grip the hinge or end piece on a metal frame to modify the temple angle for proper pantoscopic tilt. Lock onto metal temples with the opposing grooves in the jaws to make adjustments. Also used to grip the front of a plastic frame that has a shield. Recessed holes in the jaws protect the hinge screw.



▲ **Metal Glazing Plier**

Ref: PP100

Pulls glazing collets together to check lens size.



▲ **Bendsnipe Plier**

Ref: PP101

For those awkward places.



▲ **Pad Adjustment Plier**

Ref: PP103

Shaped jaws enable pads to be adjusted without damage.



▲ **Hard Wire Side Cutting Plier**

Ref: PP104

Toughened jaws to cut the harder types of frame materials. Smooth spring-return action.



▲ **Side Cutter Plier**

Ref: PP105

For standard wire cutting.



▲ **Lens Adjustment Plier**

Ref: PP106

Replaceable rubber pads: Small Ref: 106/1, Large Ref: 106/2



▲ **Round Nose Snipe Plier**

Ref: PP112

General use, bracing and shaping.



▲ **Screw Cutting Plier**

Ref: PP121

Standard range end cutting plier. Notch cut handles for improved grip.



▲ **Inclination (Nylon Jaw) Plier**

Ref: PP130

Temple adjustment (metal frames). Nylon jaw avoids damage. Replacement Jaw available.



▲ **Inclination Fine Jaw Plier**

Ref: PP131

Has nylon jaws as PP130, but metal jaw is thinner for the smaller more delicate frame. Replacement Jaw available.



▲ **Curved Holding Slotted Nylon Plier**

Ref: PP132

For holding metal sides during adjustments and assisting forming the bend on sides. Replacement Jaw available.



▲ **Rim Curving Plier**

Ref: PP133

Plastic jaws to adjust metal eye rims to follow lens curvature. Replacement Jaw available.



▲ **Diagonal Cutter Plier**

Ref: PP151

Ideal for awkward rimless screws.



▲ **Half Round Long Nose Snipe Plier**

Ref: PP152

All purpose plier with extra long nose for difficult-to-get-at places.



▲ **Holding Nylon Plier**

Ref: PP161

Flat holding plier for plastic or metal frames. Nylon pads on both jaws. Replacement Jaw available.



▲ **Flat Nose 4mm Plier**

Ref: PP171

Used for general purposes, particularly useful for holding temples on thin metal frames.



▲ **Peening Plier**

Ref: PP172

Screw and rivet flaring plier with interchangeable pin and flat anvil.



▲ **Block Remover Plier**

Ref: PP173

For removing the adhesive pad holder or rubber sucker after lens edging.



▲ **Block Removing Plier**

Ref: PP174

Stainless steel construction. Notched hand grips. 90° grip reduces chances of marking lens.



▲ **Locking Jaw Plier**

Ref: PI-209/B

Stainless steel plier with locking jaws for holding screws. 140mm long.



▲ **Setting Plier**

Ref: PI-182/S

Flat ended parallel plier. 140mm long.





▲ **Nose Pad Adjusting Plier**

Ref: PI-196/S

With one nylon jaw, especially useful for soft silicone nose pads. Replacement jaw available.



▲ **Bent Front Cutting Plier**

Ref: PI-199/C

For cutting plastic plastic staple sockets. Not for cutting metal.



▲ **Assembly Plier**

Ref: PI-207/C

Enables circles of frames to be brought together, to set assembly screws. The screw is inserted in the hollow of one of the jaws, and tightened with a long-bladed screwdriver. 135mm long.



▲ **Cutting Plier**

Ref: PI-215/E

For cutting plastic plastic staple sockets. Not for cutting metal.

## Lens Blocks



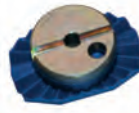
▲ WECO Blue Magnetic Block 25mm Round  
Ref: 1153031



▲ WECO Blue Magnetic Block 20mm Halfeye  
Ref: 1153037



▲ WECO Blue Magnetic Block 17mm Halfeye  
Ref: 1153035



▲ WECO Blue Magnetic Block 17mm Chamfered  
Ref: 1153036



▲ WECO White Vario Starblock 25mm Round  
Ref: 2153012



▲ WECO White Vario Starblock 20mm Flat  
Ref: 2153013



▲ WECO White Vario Starblock 17mm Chamfered  
Ref: 1153034



▲ WECO Flexible Clamping Button 25mm  
Ref: 2001-3204-00



▲ WECO Flexible Clamping Button 19mm  
Ref: 2001-3205-00



▲ WECO Flexible Clamping Button 17mm  
Ref: 2001-3315-00



▲ Briot / Weco Flexible Clamp Button 25mm Round  
Ref: 1138162



▲ Briot / Weco Flexible Clamp Button 19mm Round  
Ref: 1138161



▲ Briot / Weco Flexible Clamp Button 17mm Oval  
Ref: 1138171



▲ Briot Flexible Clamp Button 16mm Oval  
Ref: 1138195



▲ Briot Blue Magnetic Block 25mm Round  
Ref: 1153026



▲ Briot Blue Magnetic Block 19mm Round  
Ref: 1153027



▲ Briot Blue Magnetic Block 17mm Oval  
Ref: 1153028



▲ Briot Blue Magnetic Block 16mm Oval  
Ref: 1153038



▲ Universal Star Block Plano 25mm Black Round  
Ref: WE/88



▲ Universal Star Block 3 Base 25mm Yellow Round  
Ref: WE/89



▲ Universal Star Block Base 9 25mm White Round  
Ref: WE/91

## Adhesive Pad and Cup Holders



▲ Takubo DD5  
Ref: LS2/LD-3



▲ Takubo 510 600M/V2  
Ref: LS2/LD-3A



▲ Takubo DD5/DD8  
Ref: LS2/LD-4



▲ WECO 4A  
Ref: LS2/LD-4A



▲ Hoya 4B  
Ref: LS2/LD-4B



▲ AO Nikon 4C  
Ref: LS2/LD-4C



▲ Briot 4E  
Ref: LS2/LD-4E



▲ Takubo 510 600M/V2  
Ref: LS2/LD-4F



▲ Adhesive cup 1 Black No.1  
Ref: LS2/LD-4N



▲ Adhesive cup 2 Black No.2  
Ref: LS2/LD-4NA

## Suction Cup Holders



▲ Takubo DD8  
Ref: LS2/LB-13



▲ Weco  
Ref: LS2/LB-13A



▲ Hoya  
Ref: LS2/LB-13B



▲ AO, Nikon  
Ref: LS2/LB-13C



▲ SANWA  
Ref: LS2/LB-13D



▲ Briot ESSILOR, old type  
Ref: LS2/LB-13E



▲ Takubo 600M/V2  
Ref: LS2/LB-13F



▲ Essilor, new type  
Ref: LS2/LB-13G

## Suction Pad Holders



▲ Takubo LD-3  
Ref: LS2/LD-3



▲ Takubo 510 600M/V2  
Ref: LS2/LD-3A



▲ Weco Large 5999 - 1001  
Ref: W88/79



▲ Weco Small 5999 - 1002  
Ref: W88/80

## Blocking Buttons



▲ Takubo Clear Half eye button  
Ref: 600M/6H-4N



▲ Takubo Clear Half eye button  
Ref: 600M/6H-4NW



▲ Universal Rubber Block 5999 - 1010  
Ref: W88/207A

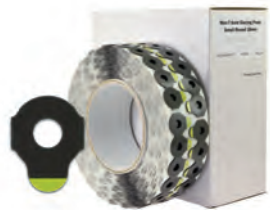
**Hydrophobic Pads**

**Max-T Gold**

A specially engineered adhesive that attaches to super-hydrophobic and oleophobic top coatings. Roll of 1,000



▲ Max-T Gold Oval 17mm  
Roll of 1,000. Ref: WE/39D



▲ Max-T Gold Small Round 18mm  
Roll of 1,000. Ref: WE/39B



▲ Max-T Gold Large Round 24mm  
Roll of 1,000. Ref: WE/39A



▲ Max-T Gold Half Eye 20mm  
Roll of 1,000. Ref: WE/39C

**Standard Pads**

**Edge-It**

Quality thin pads ideal for hi-index resin lenses and multicoated lenses. Roll of 1,000



▲ Edge-It Oval 17mm  
Roll of 1,000. Ref: WE/43D



▲ Edge-It Small Round 18mm  
Roll of 1,000. Ref: WE/43B



▲ Edge-It Large Round 24mm  
Roll of 1,000. Ref: WE/43A



▲ Edge-It Half Eye 20mm  
Roll of 1,000. Ref: WE/43C

**Premium Pads**

**3M Leap III**

These pads offer slip resistance, keeping lenses firmly in place during edging. Something customers have come to expect from 3M. Designed for WECO flexible blocks.



▲ 3M Leap III Oval 17mm  
Roll of 1,000. Ref: 1712NR



▲ 3M Leap III Small Round 18mm  
Roll of 1,000. Ref: 1693M



▲ 3M Leap III Large Round 24mm  
Roll of 1,000. Ref: 1695M



▲ 3M Leap III Large Round 26mm  
Roll of 1,000. Ref: 1692M



▲ 3M Leap III Half Eye 18mm  
Roll of 1,000. Ref: 1696M



▲ 3M Leap III Square 24mm  
Roll of 1,000. Ref: 1700M

**Norville Pads**



▲ Norville Large Round 24mm  
Roll of 1,000. Ref: WE/33



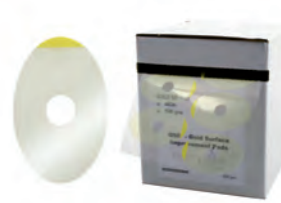
▲ Norville Half Eye 24mm  
Roll of 1,000. Ref: WE/33A



▲ Edge III Large Round 24mm  
Premium adhesive edging pads suitable for all kinds of lenses - a perfect all rounder. Roll of 1,000. Ref: WE/43A



▲ SIP Clear Surface Improvement Pad  
Surface improvement pads for hydrophobic coated lenses. Roll of 500, 40 x 26mm. Ref: WE/33E



▲ GSIP Gold Surface Improvement Pad  
Ultra-sticky surface improvement pad for the most challenging slippery coatings on the market. Can be used front and back. Roll of 500, 40 x 26mm. Ref: WE/33G

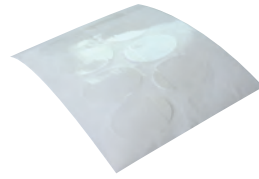


▲ Blue Lens Former  
Ref: CT8903  
Box of 100. Size: 68 x 58 x 1.5mm.





▲ **Lens Grip Spray**  
For use with hydrophobic coated lenses.  
100ml bottle. Ref: 0400-114



▲ **Coval Clear Glazing Foils**  
Anti slip pads for coated lenses.  
Roll of 1000. Ref: WE/33B

## Lap Tools



▲ **Plastic yellow fining/polishing tool**  
For limited usage. Available in bar back and flat back (cruciform).  
4 different curvatures.

Bar Back  
Ø82mm Ref: Yellow BR/BK  
A: 001, B: 002, C: 003, D: 004

Flat Back (cruciform)  
Ø82mm Ref: Yellow FT/BK  
A: 005, B: 006, C: 007, D: 008



▲ **Glass-reinforced terracotta fining/polishing tool**  
Very stable and durable material for extended usage. Available in bar back  
and flat back (cruciform). 4 different curvatures.

Bar Back  
Ø82mm Ref: Terracotta BR/BK  
A: 009, B: 010, C: 011, D: 012

Flat Back (cruciform)  
Ø82mm Ref: Terracotta FT/BK  
A: 013, B: 014, C: 015, D: 016

### Plastic



▲ **Beige Polishing**  
76mm Ref: FPP/70  
89mm Ref: FPP/72A  
250 per roll.



▲ **1st Fine 1000  
Grit Compensated**  
83mm Ref: CFP/11  
250 per roll.



▲ **1 Step Fining  
1200 Grit  
Compensated**  
83mm Ref: CFP/26  
250 per roll.



▲ **Yellow Polishing  
for high index  
plastics**  
89mm Ref: G3A5  
250 per roll.

### Polycarbonate



▲ **Sapphire  
Polishing**  
89mm Ref: CSP  
1000 per roll.



▲ **Q 1 Step Fining**  
89mm Ref: PQ1/89  
1000 per roll.



▲ **Polishing 83mm**  
Ref: PPP/83  
250 per roll.

### Glass



▲ **White Polishing**  
76mm Ref: PPBH/76  
1000 per roll.



▲ **White Polishing**  
83mm Ref: PPBH/83  
1000 per roll.



▲ **White Polishing**  
89mm Ref: PPBH/89  
1000 per roll.



▲ **Medium Wyrton**  
76mm Ref: WMC/41A  
250 per roll.



▲ **Black 1000 8-leaf**  
77mm Ref: CFP/21  
1000 per roll.



◀ Polishing Machine

Ref: CT5312

Power: 400W, RPM: 2000-8000, Weight: 7.48Kg, Dimensions: 40 x 19 x 24cm, Input voltage: AC100-120V / 60Hz, AC200-240 / 50Hz



▲ Defoamer

Ref: WE/4

Added to generator and edger reservoirs, it breaks the surface tension that occurs in water, allowing solids to penetrate the surface and drop to the bottom. 32 fl oz. bottle.



▲ Coolant Oil

Ref: WE/170

For generating, surfacing and glazing. Specially formulated to lubricate and reduce friction on all types of diamond wheels. 5 litre container.



▲ NUC II Organic Lens Polish

Ref: WE/51C

1 Gallon container.



▲ Foamdoctor - silicon free

Ref: WE/53

A high efficiency, anti-foaming agent. Suitable for all glazing and surfacing applications. 5 litre container.



▲ Cerox

Ref: WE/050A

20Kg container.



▲ Abralox Powder

P15 Ref: WE/49

P20 Ref: WE/49

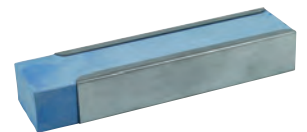
Polishing powder. 25Kg container.



▲ Metaflow 117

Ref: WE/63

47°C blocking alloy for glass and plastic.



▲ Polishing Stick

Ref: AP1/AP-83



▲ Blue dressing stick

Ref: WE/62



▲ White dressing stick (Fine)

Ref: WE/61



▲ Polish (Light Brown)

Ref: WE/204



▲ Polish (Brown)

Ref: WE/205



**Takubomatic**

▲ **Buffing Wheel**

For Takubomatic machines only.  
Ref: AP1/AP-80



▲ **Surface Guard III Tape**

35M roll Ref: WE/36  
70M roll Ref: WE/36L  
Surface Guard III Blue.



▲ **Surface Guard Hi-Tack**

35M roll Ref: WE/36  
Surface Guard Hi-Tack Clear.



**3M**

▲ **3M Surface Saver Tape**

45M roll Ref: WE/34  
Surface Saver Blue.

## Lightbulbs



▲ **Bausch & Lomb**  
250v 15W  
WE/175



▲ **Inami/Eyco**  
250v 15W  
WE/157



▲ **AIT 501 marker**  
6v 25W  
501/11



▲ **LM6/LM7**  
240/250v 25W  
WE/154



▲ **LM2/LMT3**  
250v 25W  
WE/167



▲ **LM-5/6/7**  
240v 15W  
WE/201



▲ **LMP-5**  
6v 15W  
WE/158



▲ **Magnon LM350**  
250v 15W  
LM100/01



▲ **Nikon PL2**  
6v 15W  
WE/165



▲ **Shin Nippon focimeter**  
240v 15W  
WE/240



▲ **Shin Nippon RGI-4 projector**  
6v 20W  
WE/243



▲ **Slit Lamp**  
6v 4.5 amp  
WE/174



▲ **S**  
6v 20W  
24727



▲ **LC2/LC1**  
6v 2 amp  
ZG1/6



▲ **TL-3**  
6v 6W  
WE/101



▲ **Weco 12**  
220v 15W  
WE3905



## Miscellaneous Spares



▲ Ink cartridge marker unit  
Ref: LM770/0  
Magnon code: 30281-3230



▲ Ink cartridge unit  
Ref: LM770/08  
Magnon code: 30281-3261



▲ Rubber top Nosepiece  
Ref: LM770/07  
Magnon code: 30281-M3237



▲ Thermal Printer Paper (VX35)  
Ref: 8236-4018



▲ Thermal Printer Paper (VX36)  
Ref: 8236-5028-00



▲ Printer Paper (VX40)  
Ref: 8236-4018  
32mm



▲ Sponge - Small  
Ref: 1017-3016



▲ Sponge - Large  
Ref: 1017-3018



▲ Ink cartridge VX35 (red)  
Ref: 8235-5002-00



▲ Ink cartridge VX36 (white)  
Ref: 8236-5028-00



▲ Ink cartridge VX36 (single)  
Ref: 8236-5033-00



▲ Stylus Pen (VX40)  
Ref: 3014-4003-10



▲ WECO Magnetic Block  
Removal tool  
Ref: 14 07 031



▲ WECO Block Paddy  
Ref: 69 00 001



▲ Briot Magnetic Block  
Removal tool  
Ref: 14 07 030



**▲ Universal Filter Unit**

20L filter unit with reusable metal mesh filter. Compatible with all edgers on mains water.

Ref: 5180003



**▲ Pump and Tank**

Small 30L or large 60L pump and tank unit featuring a unique 3 stage filtration system keeping your water clean for longer.

Ref: 5130123 (60L)

Ref: 5130124 (30L)

Kit of 5 filters for Pump and tank Ref: 5180236

**Takubomatic**

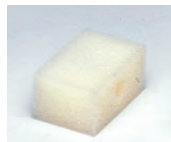


▲ **Takubomatic NH30V Hand Edger**

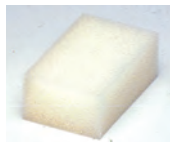
Ref: MC/037

- Forward and reverse wheel rotation.
- Self contained water tank.
- Available with standard and vee wheel configuration, or with choice of up to six wheel designs.
- Compact and lightweight.
- Simple and safe operation.

**NH30V Spare Parts**



▲ Sponge (lower)  
Ref: NH30V/NH-11



▲ Sponge (upper)  
Ref: NH30V/NH-13



▲ Diamond wheels (left to right)  
Fine flat wheel - Ref: NH30V/NH-22F  
Vee wheel - Ref: NH30V/NH-22V  
Fine flat wheel - Ref: NH30V/NH-30F  
Vee wheel - Ref: NH30V/NH-30V  
Fine & rough flat wheel - Ref: NH30V/NH-30W  
Rough flat & fine vee wheel - Ref: NH30V/NH-32WV  
Takubo vee wheel - Ref: NH30V/NH-32TV



▲ Sponge cover  
Ref: NH30V/NH-26



▲ Belt  
Ref: NH30V/NH-9



▲ Main switch (front)  
Ref: NH30V/NH-12



▲ Reverse rotation switch  
Ref: NH30V/NH-18



◀ Water tank  
Ref: NH30V/NH-29



◀ Drain tank  
Ref: NH30V/NH-19





## Terms and Conditions of Sale

### 1. Definitions:

For the purpose of these terms "the seller" shall mean Norville (20/20) Ltd, "the buyer" shall mean the person, firm or company to whom the Seller agrees to sell or supply the goods (and if more than one the provisions hereof shall be binding on them jointly and severally), "the goods" shall mean all goods which are subject of any contract of sale or supply between the Seller and the Buyer; and the contract means the contract of the sale of goods.

### 2. General. All sales are made subject to these terms.

i. All quotations are given and all orders are accepted on these Terms, which supersede any other terms appearing in the Seller's catalogue or elsewhere and these Terms shall override and exclude any other terms stipulated, incorporated or referred to by the Buyer, whether in the order or in any negotiations or in any course of dealing established between the Seller and the Buyer.

ii. No modification to these terms shall be effective unless made by an express written agreement between the parties. The signing of the Seller of any of the Buyer's documentation shall not imply any modifications of these terms.

### 3. Suitability

All sales are made to the following terms and conditions and upon the express condition that, so long as the goods supplied are of sound commercial quality, there is no guarantee of their suitability for any specific purpose, even if that purpose is known to the seller.

Product changes: The Seller reserves the right to make changes in design of modify or improve products without imposing obligations on itself to incorporate any such modifications or improvements into products previously manufactured.

Where the buyer has specified that the goods shall be of a certain colour or size, such specification shall be subject to reasonable commercial variation, other than where specifically agreed with the seller.

### 4. Price

Unless otherwise expressly agreed in writing, the price of the goods shall be that ruling on the date of delivery. The Seller reserves the right to alter prices at any time prior to delivery.

### 5. Payment

Unless otherwise agreed in writing, payment is due within thirty days of the month in which the Goods are invoiced by the Seller without deduction or set off. Interest may be levied on all overdue amounts at the rate of 2% per month on the outstanding sum until payment is received after, as well as before, any judgement thereon. The Seller reserves the right to levy a charge for copies of invoices and statements.

### 6. Cancellation or Alteration

A charge will be made for all work carried out up to the time the order is cancelled or altered. It is not possible to cancel or amend orders placed by direct modem transmission.

### 7. Delivery.

i. All delivery dates are estimates only and the time of delivery shall not be the essence of the contract. The Seller shall not in any way be liable to compensate the buyer in damages or otherwise for non-delivery or late delivery of the goods or any of them for whatever reason or for any loss consequential or otherwise arising there from unless the Buyer's claims are submitted in writing.

- a.) For damages or partial loss in transit within 14 days of delivery.
- b.) For non-delivery of the whole consignment within 14 days of receipt of the monthly statement

ii. Unless otherwise agreed in writing the place of delivery shall be the Buyer's normal place of business.

iii. The Seller reserves the right to deliver the goods by instalments. Where delivery is made by instalments, each delivery shall be deemed for such purpose to be the subject of a separate contract and any failure whatsoever by the Seller in respect of any one delivery shall not entitle the Buyer to repudiate the contract or any instalment remaining to be delivered there under.

iv. A charge for carriage and packing will be levied on all orders. The Seller reserves the right, where specified deliveries are required, to charge all costs thereof in addition.

v. If the Buyer is unable to accept delivery of the goods at the time when the goods are ready for delivery, the Seller will, if its storage facilities permit, store the goods until actual delivery and the Buyer shall be liable to the Seller for the reasonable costs of such storage, including any addition to and not in substitution for any other payment or damages for which the Buyer may become liable due to its failure to take delivery at the appropriate date.

### 8. Passing of Risk and Property

i. The risk in the goods shall pass on to the Buyer on actual delivery.

ii. Title to the goods supplied shall remain with the Seller until the Seller has received the full purchase price of the goods or until the Buyer sells the goods to its customer by way of bona-fide sale at full market value in the normal course of business. The Buyer acknowledges that until such time the Buyer is in possession of the goods solely as bailee for the Seller.

iii. Until the buyer becomes the owner of the goods, the Buyer shall store and mark the goods so that they are readily identifiable as the Seller's property.

iv. The Buyer's right to sell the goods and to possession thereof shall immediately cease on the occurrence of any one or more of the events referred to in Clause 14 which would entitle the Seller, inter alia, to terminate the contract. On the occurrence of any such event the Seller (without prejudice to its other rights) shall be entitled to recover or re-sell the goods and for that purpose the Seller by its servants or agents may enter upon premises where the goods are or are believed to be stored and may repossess them.

### 9. Warranty

i. No condition is made or to be implied nor is any warranty given or to be implied as to the life or wear of the goods supplied or that they will be suitable for any particular purpose or for use under any specific conditions, notwithstanding that such purpose or conditions may be known to the Seller, unless and except as any specific written warranty may be given by the Seller. Where such a specific written warranty is given its terms shall be incorporated into and shall form part of these conditions and shall for all purposes be construed as such.

ii. The goods are warranted against defective material and workmanship under normal use and application. The Seller's liability in accordance with European Product Legislation.

iii. Save as provided herein, the Seller shall not be liable to the Buyer for any loss (including but not limited to consequential or economic loss), damage or expense of whatever nature and howsoever arising out of or in connection with the goods.

### 10. Returned Goods

The original order and delivery note must be returned with the goods when requesting credit or exchange and with goods returned for verification. No goods can be returned for credit except by prior arrangement. Unless the goods are returned due to faulty product or incorrect despatch a 10% charge will be levied. These conditions do not affect your statutory rights.

### 11. Patent Infringement

When the goods are made or adapted by the Seller in accordance with the Buyer's specifications the Buyer shall indemnify the Seller against all costs, claims and expenses incurred by the Seller in respect of the infringement by the goods of any patents, registered designs, trade marks or other rights belonging to third parties.

### 12. Limitation of Liability

The Seller's liability (if any) whether in contract or otherwise in respect of any defect in the goods or for any breach of this agreement or of any duty owed to the Buyer in connection herewith shall be limited to the price of the goods in question. The Seller shall not be liable for any loss of any duty owed to the Buyer arising from any damage to the goods occurring after the risk has passed to the Buyer however caused, nor shall any liability of the buyer to the Seller be diminished or extinguished by reasons of such loss.

### 13. Force Majeure

i. If the performance of the contract or any obligation thereunder is prevented by force majeure, a Seller shall be excused performance, provided that the Seller shall use reasonable endeavours to remove such cause or causes of non-performance, and shall continue performance hereunder without delay whenever such cause or causes are removed.

ii. For the purposes of these Terms, the expression "force majeure" includes Acts of God, strikes, lock-outs, other industrial action, fire, accident, lightning, earthquakes, storms, floods, explosion, war and any other circumstance, whether similar or dissimilar beyond reasonable control of the Seller.

### 14. Termination

If the Buyer makes default in any payment, or commits any breach of the terms and conditions of the contract, or suffers distress or execution, or becomes insolvent or commits an act of bankruptcy, or enters into any agreement or composition with his creditors, or goes or is put into liquidation, (other than solely for amalgamation or re-construction), or if administrative receiver or administrator is appointed over any part of the Buyer's business, or of a petition for administration order is presented to the court, the Seller may without prejudice to any rights which may have accrued, or which may accrue to it, at its option: a) require payment in advance for all or any further deliveries or b) suspend any further deliveries until such default or breach, if capable of rectification, is rectified or c) terminate and contract and/or d) terminate any other contracts which the buyer has placed with the Seller so far as goods remain to be delivered thereunder.

### 15. Miscellaneous

The contract between the Seller and the Buyer for the supply of goods shall be governed and construed in accordance with the laws of England and the Buyer agrees to submit to the Jurisdiction of the Courts of Law in England. No forbearance or indulgences shown or granted by the Seller to the Buyer shall in any way affect or prejudice the right of the Seller against the Buyer or be regarded as a waiver of these conditions.

When ordering items please quote the stock code where stated. Payment terms: 30 days net from invoice date. UK Minimum delivery cost: £4.00 per order. All goods are priced 'ex-warehouse'. We add an appropriate amount to cover postage, packing and insurance, depending on product ordered/weight and destination.

We welcome payment by the following credit cards:



PLEASE NOTE: MINIMUM INVOICE CHARGE IS £10.00. ALL PRICES ARE NETT AND EXCLUDE VAT AND CARRIAGE (a 10% handling charge will be applied on goods returned that are not faulty).

Please note: Some pictures include contents for illustration purposes only. Unless specifically stated, all items are supplied empty. Details correct at time of printing.

# www.norville.co.uk



## Online Ordering

- Customised product search engine
- Thousands of optical products online
- Selection, convenience and expertise
- Simple, safe and secure

**NORVILLE**  
— INSPECS GROUP PLC —

**Norville (20/20) Ltd**  
**Magdala Road**  
**Gloucester**  
**GL1 4DG**  
**Tel: 01452 510332**  
**Fax: 01452 510331**  
**Email: autoflow@norville.co.uk**

**www.norville.co.uk**

*Norville (20/20) Ltd is based in Gloucester in the South-West of England. Our spectacle lens supply business was established over 60 years ago and is constantly being modernised to meet today's changing technology.*

*Norville operate a network of nationwide laboratories, in addition to the Gloucester hub, at Bolton, Edinburgh and Seaham.*